

GROUP 52A

INTERIOR

CONTENTS

GENERAL DESCRIPTION	52A-2	HEADLINING	52A-19
SEAT BELT WARNING SYSTEM DIAGNOSIS	52A-2	REMOVAL AND INSTALLATION	52A-19
SPECIAL TOOL	52A-2	INSIDE REAR VIEW MIRROR	52A-20
INSTRUMENT PANEL ASSEMBLY*	52A-3	FRONT SEAT ASSEMBLY*	52A-21
REMOVAL AND INSTALLATION	52A-3	REMOVAL AND INSTALLATION	52A-21
DISASSEMBLY AND ASSEMBLY	52A-7	DISASSEMBLY AND ASSEMBLY	52A-22
FRONT FLOOR CONSOLE ASSEMBLY	52A-8	REAR SEAT ASSEMBLY	52A-23
REMOVAL AND INSTALLATION	52A-8	REMOVAL AND INSTALLATION	52A-23
REAR FLOOR CONSOLE ASSEMBLY	52A-9	DISASSEMBLY AND ASSEMBLY	52A-26
REMOVAL AND INSTALLATION	52A-9	FRONT SEAT BELT*	52A-28
DISASSEMBLY AND ASSEMBLY	52A-10	REMOVAL AND INSTALLATION	52A-28
TRIMS	52A-12	INSPECTION.....	52A-29
REMOVAL AND INSTALLATION	52A-12	REAR SEAT BELT	52A-29
DOOR TRIM	52A-14	REMOVAL AND INSTALLATION	52A-29
REMOVAL AND INSTALLATION	52A-14	SPECIFICATIONS	52A-30
		FASTENER TIGHTENING	
		SPECIFICATIONS.....	52A-30

WARNING

Battery posts, terminals and related accessories contain lead and lead compounds. WASH HANDS AFTER HANDLING.

WARNINGS REGARDING SERVICING OF SUPPLEMENTAL RESTRAINT SYSTEM (SRS) EQUIPPED VEHICLES

WARNING

- *Improper service or maintenance of any component of the SRS, or any SRS-related component, can lead to personal injury or death to service personnel (from inadvertent firing of the air bag) or to the driver and passenger (from rendering the SRS inoperative).*
- *Service or maintenance of any SRS component or SRS-related component must be performed only at an authorized MITSUBISHI dealer.*
- *MITSUBISHI dealer personnel must thoroughly review this manual, and especially its GROUP 52B - Supplemental Restraint System (SRS) before beginning any service or maintenance of any component of the SRS or any SRS-related component.*

NOTE

The SRS includes the following components: SRS air bag control unit, SRS warning light, front impact sensors, air bag module, clock spring, and interconnecting wiring. Other SRS-related components (that may have to be removed/installed in connection with SRS service or maintenance) are indicated in the table of contents by an asterisk (*).

GENERAL DESCRIPTION

M1521000100203

OPERATION

SEAT BELT WARNING SYSTEM

If the driver turn the ignition switch to the "ON" position without fastening the seat belt, the seat belt warning light illuminates.

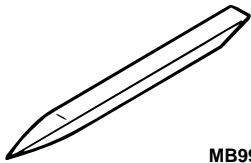
SEAT BELT WARNING SYSTEM DIAGNOSIS

M1523000700096

The seat belt warning system is controlled by Simplified Warning System (SWS). For troubleshooting, refer to GROUP 54B, SWS Diagnosis [P.54B-7](#).

SPECIAL TOOL

M1521000600082

TOOL	TOOL NUMBER AND NAME	SUPERSESSION	APPLICATION
 MB990784	MB990784 Ornament remover	General service tool	Removal of switch, trim, etc.

INSTRUMENT PANEL ASSEMBLY




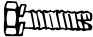
REMOVAL AND INSTALLATION

M1521001700479

⚠ WARNING

For removal and installation of the passenger's side air bag module, always observe the service procedures described in GROUP 52B, Air Bag Module and Clock Spring P.52B-205.

The following bolts and screws are used for installing the instrument panel. Bolts and screws are indicated as marks shown in the illustration in the sections of "Removal and Installation" and "Disassembly and Assembly."

NAME	SYMBOL	SIZE (D × L) mm	COLOR	SHAPE
Tapping screw	a	5 × 16	Black	 ACX01282
	b	5 × 16	-	
	c	5 × 12	-	 ACX01283
Bolt with washer	d	6 × 12	-	 ACX02229
	e	5 × 20	-	 AC005505

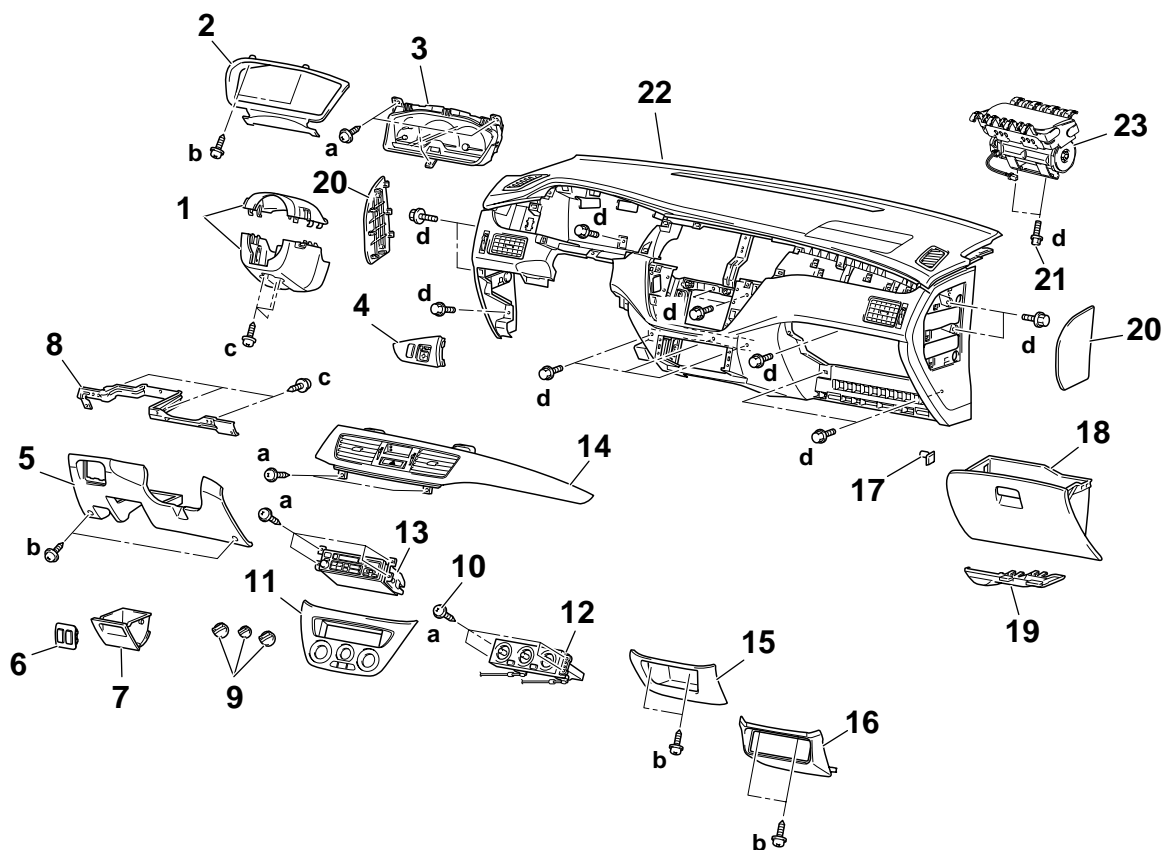
D: Thread diameter L: Effective thread length

CAUTION

- Refer to GROUP 52B-SRS Service Precautions P.52B-16 and Air bag Module and Clock Spring P.52B-205 before removing the passenger side air bag module.
- Do not subject the SRS-ECU to any shocks when removing or installing the instrument panel.

Pre-removal and Post-installation Operation

- Removal and Installation of Front Pillar Trim (Refer to P.52A-12.)
- Hood Opener Lever (Refer to GROUP42, Hood P.42-7.)



AC005172AE

REMOVAL STEPS

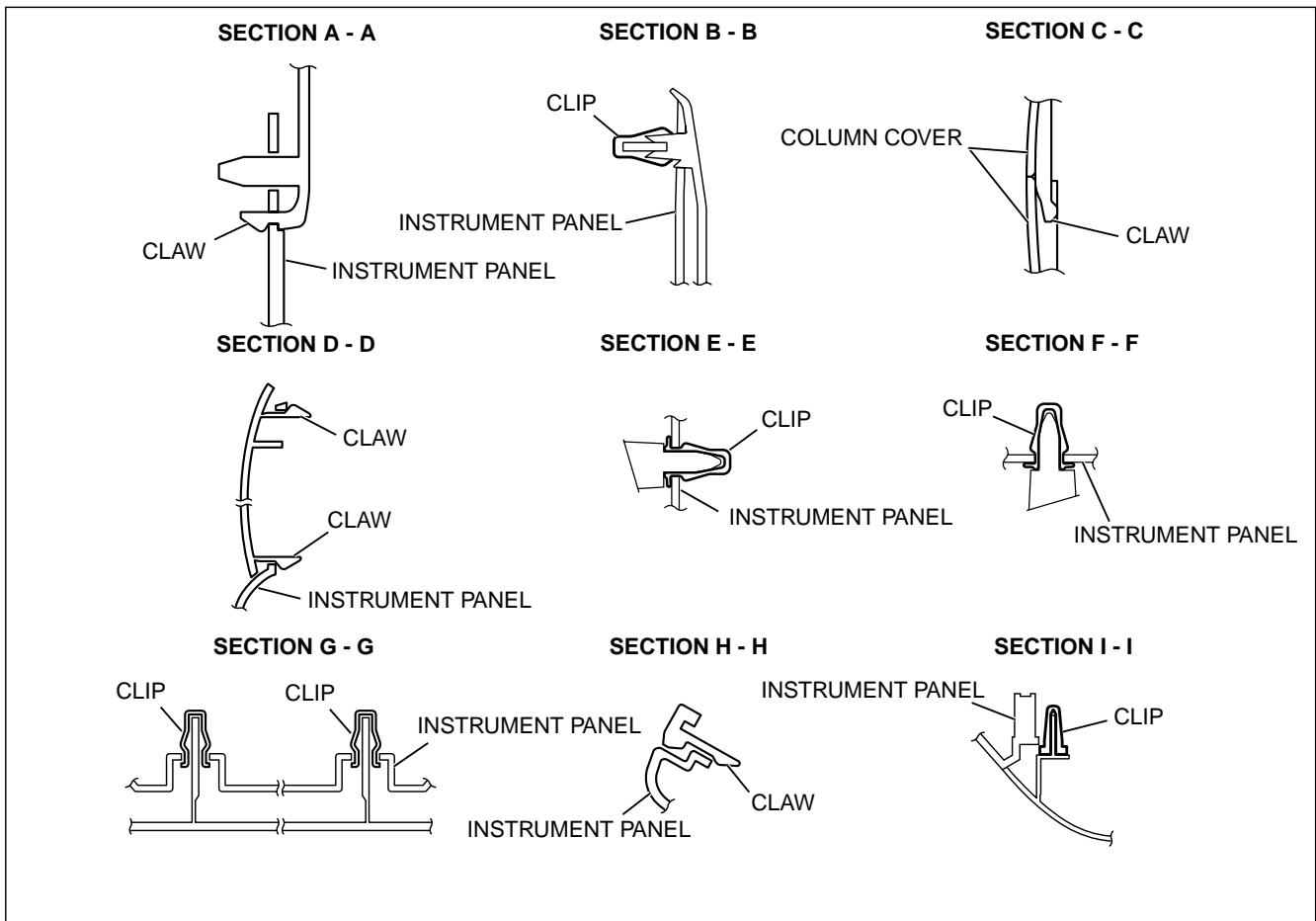
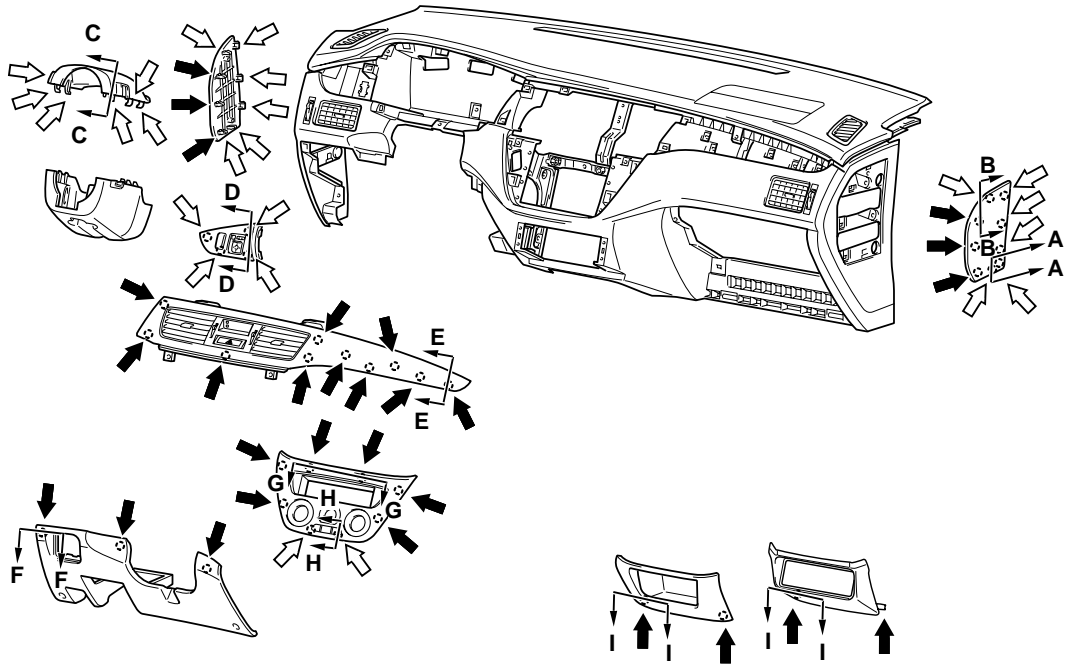
1. COLUMN COVER
2. METER BEZEL
3. COMBINATION METER
4. INSTRUMENT PANEL ORNAMENT
5. UNDER COVER
6. SWITCH PANEL
7. SIDE BOX
8. LOWER FRAME
9. HEATER CONTROL KNOB
10. HEATER CONTROL ASSEMBLY MOUNTING SCREW
11. CENTER PANEL
12. HEATER CONTROL ASSEMBLY
13. RADIO AND TAPE PLAYER
14. CENTER AIR OUTLET PANEL
15. CENTER LOWER CASE

<<A>>

REMOVAL STEPS (Continued)

16. CENTER LOWER PANEL <VEHICLE WITH CD AUTOMATIC CHANGER>
17. STOPPER
18. GLOVE BOX
19. HARNESS COVER
20. INSTRUMENT PANEL SIDE COVER
21. SRS FRONT PASSENGER'S AIR BAG MODULE MOUNTING BOLT
 - STEERING COLUMN SHAFT MOUNTING BOLT (REFER TO GROUP 37A - STEERING WHEEL AND SHAFT.)
22. INSTRUMENT PANEL ASSEMBLY
23. SRS FRONT PASSENGER'S AIR BAG MODULE

CLIP AND CLAW POSITION

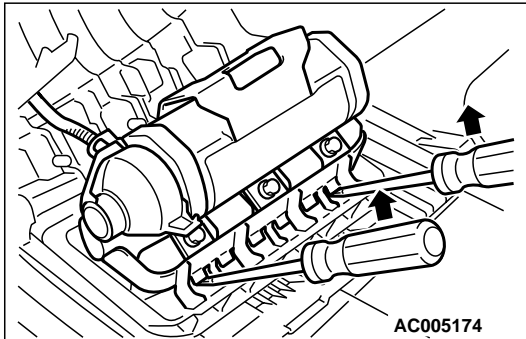


AC005173AE

REMOVAL SERVICE POINT**<<A>> SRS FRONT PASSENGER'S AIR BAG MODULE
REMOVAL****⚠ CAUTION**

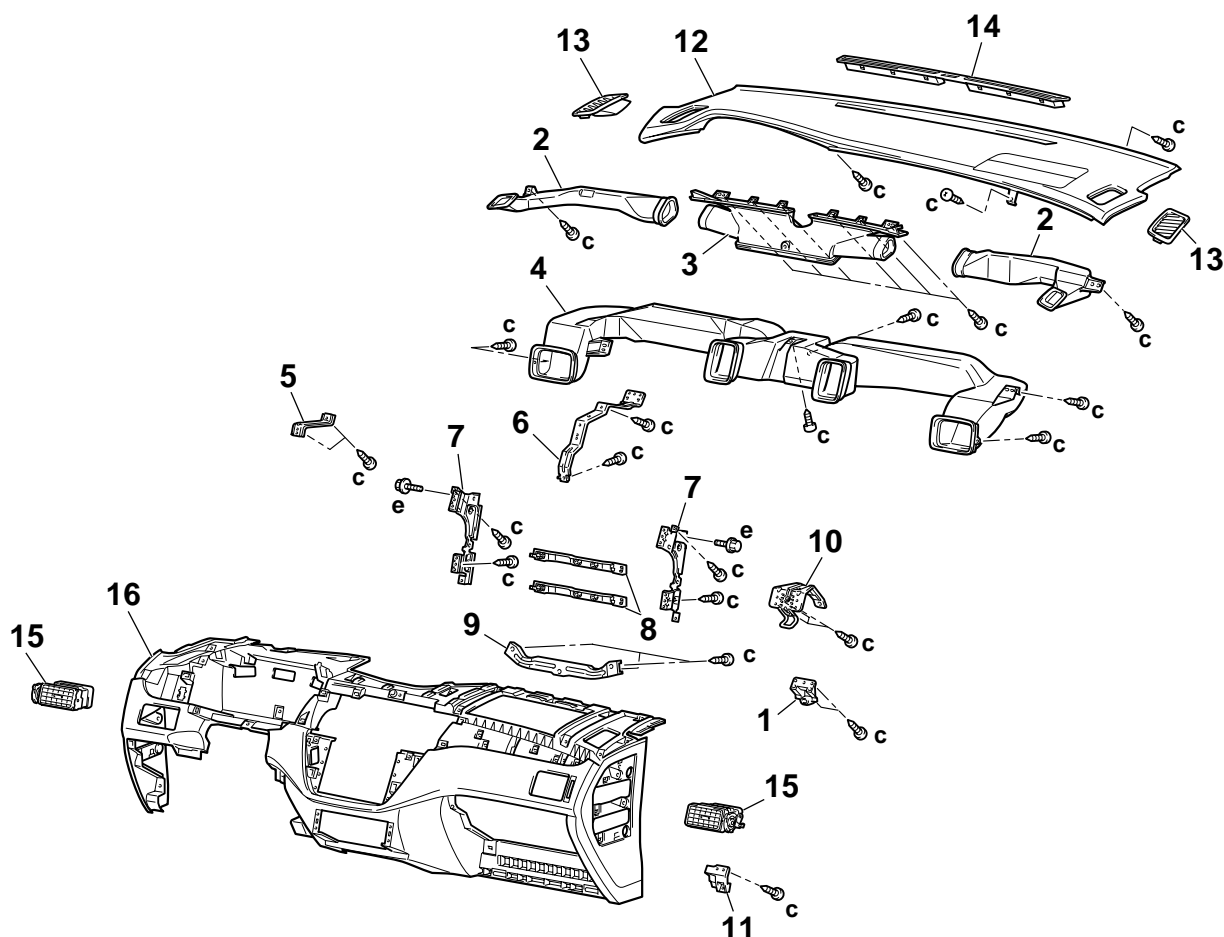
1. Do not damage the claws of the hinge when removing the front passenger's air bag module.
2. Store the removed front passenger's air bag module facing the deployed side upward in a clean and dry place.

Insert the flat tipped screwdriver into the position shown in the illustration and pull up the screwdriver to disengage the claws for removal of the front passenger's air bag module.



DISASSEMBLY AND ASSEMBLY

M1521001900086



AC005175 AB

DISASSEMBLY STEPS

1. INSTRUMENT PANEL UPPER SUPPORT
2. SIDE DEFROSTER DUCT
3. CENTER DEFROSTER DUCT
4. DISTRIBUTION DUCT
5. DRIVER SIDE UPPER BRACKET
6. CENTER UPPER REINFORCEMENT
7. INSTRUMENT PANEL CENTER REINFORCEMENT
8. BRIDGE REINFORCEMENT

DISASSEMBLY STEPS (Continued)

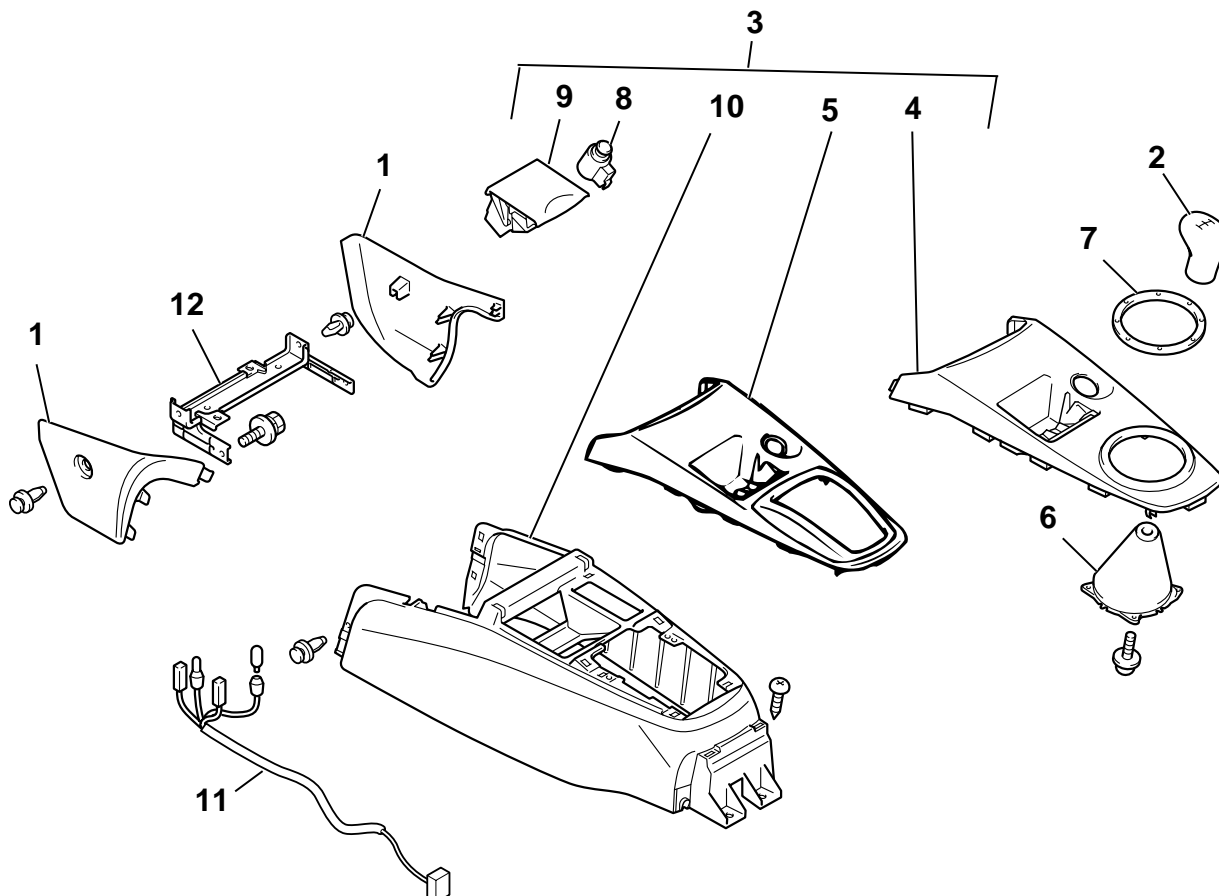
9. CENTER LOWER REINFORCEMENT
10. GLOVE BOX STRIKER
11. GLOVE BOX COVER
12. INSTRUMENT PANEL PAD
13. SIDE DEMISTER
14. DEFROSTER GARNISH
15. SIDE AIR OUTLET ASSEMBLY
16. INSTRUMENT PANEL

FRONT FLOOR CONSOLE ASSEMBLY**REMOVAL AND INSTALLATION**

M1521005200067

Pre-removal and Post-installation Operation

- Removal and Installation of Rear Floor Console (Refer to [P.52A-9.](#))



AC005506AB

REMOVAL STEPS

1. CONSOLE SIDE COVER
2. SHIFT LEVER KNOB <M/T>
3. FRONT FLOOR CONSOLE ASSEMBLY
4. FRONT FLOOR CONSOLE PANEL <M/T>
5. FRONT FLOOR CONSOLE PANEL <A/T>
6. SHIFT LEVER COVER <M/T>

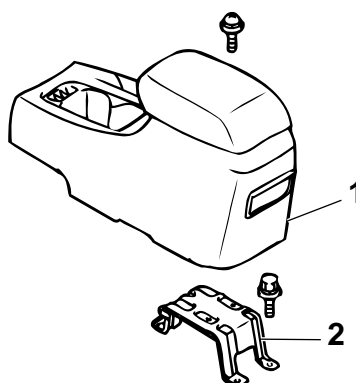
REMOVAL STEPS (Continued)

7. SHIFT LEVER PANEL GARNISH <M/T>
8. CIGARETTE LIGHTER
9. ASHTRAY
10. FRONT FLOOR CONSOLE
11. HARNESS
12. CONSOLE SIDE COVER BRACKET

REAR FLOOR CONSOLE ASSEMBLY

REMOVAL AND INSTALLATION

M1521005700017



AC005176AB

REMOVAL STEPS

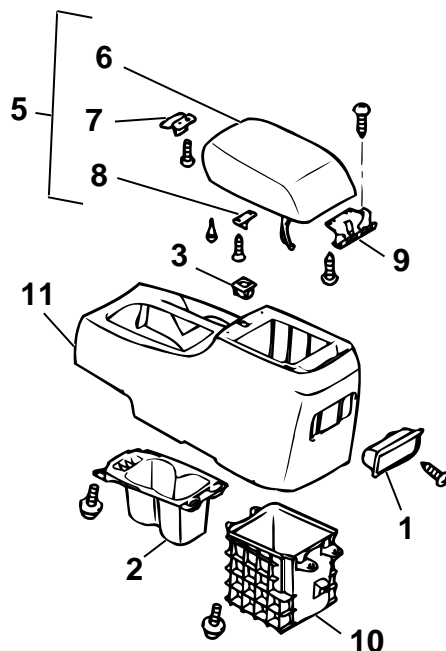
1. REAR CONSOLE ASSEMBLY
 - REAR SEAT CUSHION ASSEMBLY (REFER TO [P.52A-23.](#))
 - FRONT SCUFF PLATE (REFER TO [P.52A-12.](#))

REMOVAL STEPS (Continued)

- REAR SCUFF PLATE (REFER TO [P.52A-12.](#))
 - LOWER CENTER PILLAR TRIM (REFER TO [P.52A-12.](#))
 - FLOOR CARPET
2. REAR CONSOLE BRACKET

DISASSEMBLY AND ASSEMBLY

M1521005900107



AC005507AB

DISASSEMBLY STEPS

1. ASHTRAY
2. CUP HOLDER
3. HOLE LOCK
4. CONSOLE LID ASSEMBLY
5. CONSOLE LID
6. UPPER LID LOCK
7. LOWER LID STRIKER

DISASSEMBLY STEPS

8. HINGE BRACKET
9. BOX
10. REAR FLOOR CONSOLE

Required Special Tool:

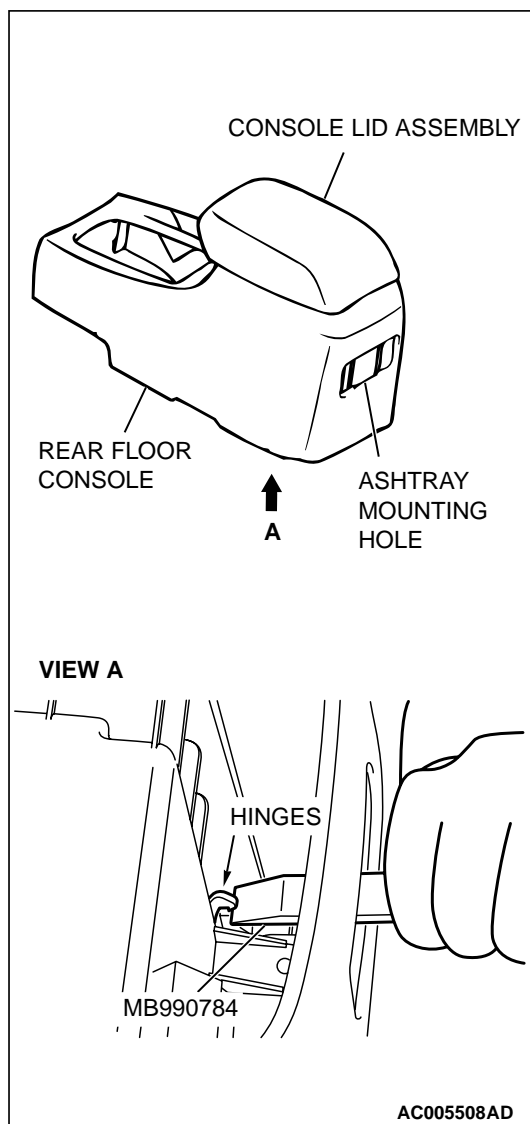
- MB990784: Ornament remover

<<A>>

DISASSEMBLY SERVICE POINTS

<<A>> CONSOLE LID ASSEMBLY REMOVAL

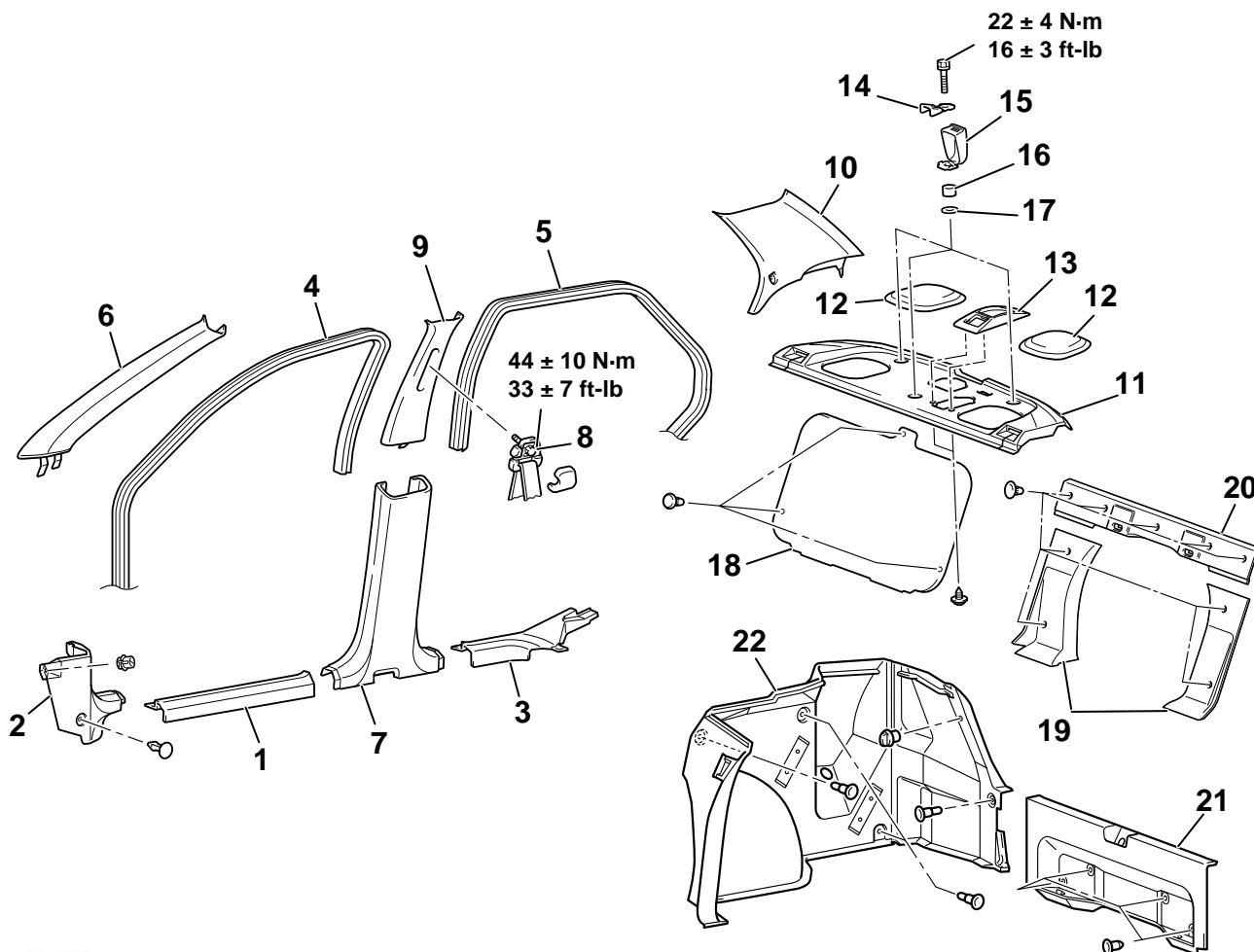
Insert the special tool MB990784 into the hinges of the console lid assembly and the rear floor console through the ashtray mounting hole to pry for removal.



TRIMS

REMOVAL AND INSTALLATION

M1521001100466

**NOTE**

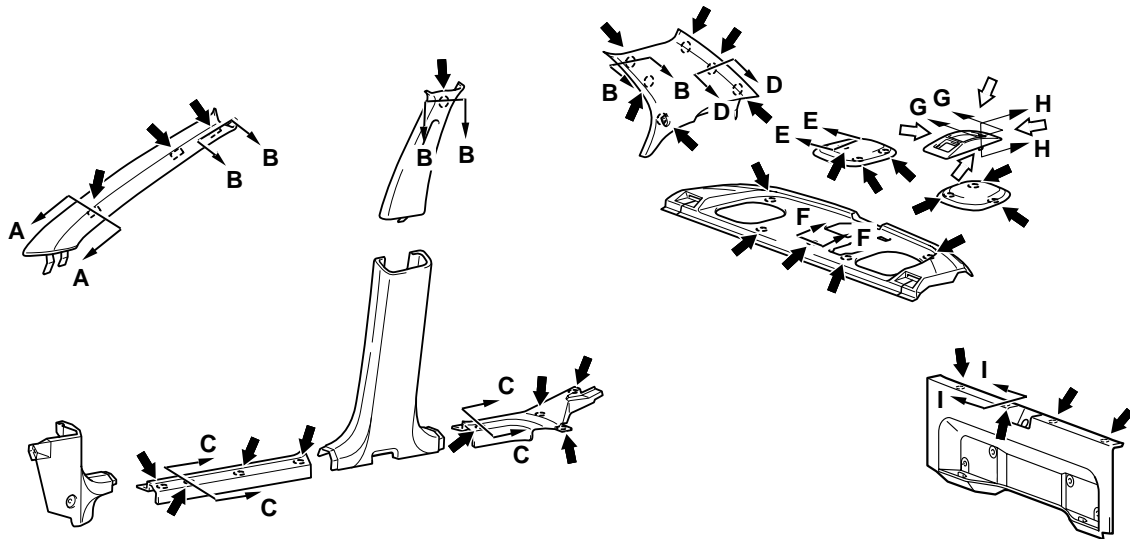
Refer to GROUP42 for more information regarding door trim.

AC005509AC

<<A>>

- | | |
|-------------------------------|--|
| 1. FRONT SCUFF PLATE | 13. RETRACTOR COVER |
| 2. COWL SIDE TRIM | 14. CHILD RESTRAINT FITTING |
| 3. REAR SCUFF PLATE | 15. COVER |
| 4. FRONT DOOR OPENING TRIM | 16. SPACER |
| 5. REAR DOOR OPENING TRIM | 17. FIBER WASHER |
| 6. FRONT PILLAR TRIM | 18. PARTITION BOARD <VEHICLE WITH BENCH SEAT> |
| 7. CENTER PILLAR TRIM, LOWER | 19. REAR SEATBACK BRACE TRIM <VEHICLE WITH SPLIT SEAT> |
| 8. FRONT SEAT BELT CONNECTION | 20. REAR SEATBACK TRIM <VEHICLE WITH SPLIT SEAT> |
| 9. CENTER PILLAR TRIM, UPPER | 21. REAR END TRIM |
| 10. REAR PILLAR TRIM | 22. TRUNK SIDE TRIM |
| 11. REAR SHELF TRIM | |
| 12. SPEAKER GARNISH | |

CLIP POSITION

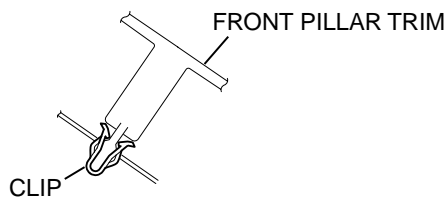


NOTE

◄: CLIP POSITIONS

◁: CLAW POSITIONS

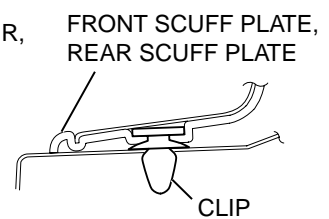
SECTION A - A



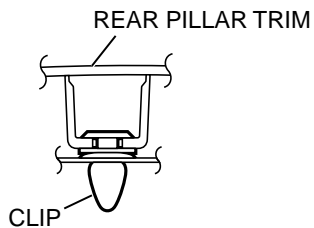
SECTION B - B



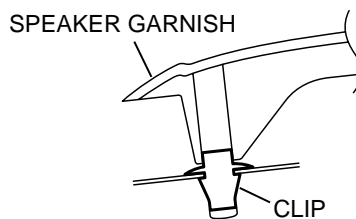
SECTION C - C



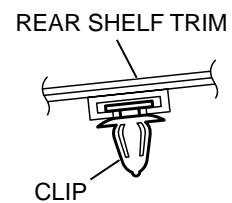
SECTION D - D



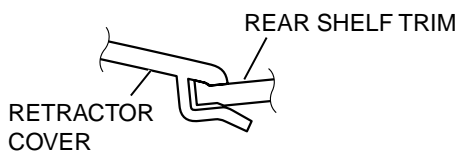
SECTION E - E



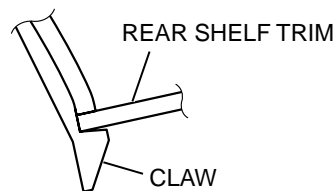
SECTION F - F



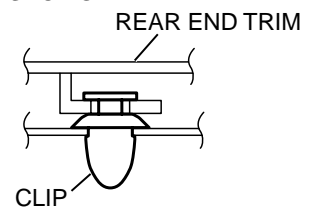
SECTION G - G



SECTION H - H



SECTION I - I

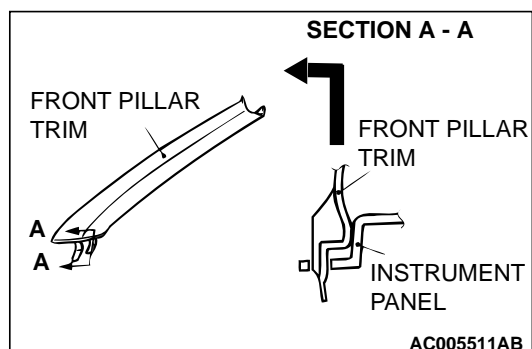


AC203988 AC

REMOVAL SERVICE POINT

<<A>> FRONT PILLAR TRIM REMOVAL

Release the clip to pull towards the direction shown in the illustration and remove the front pillar trim.

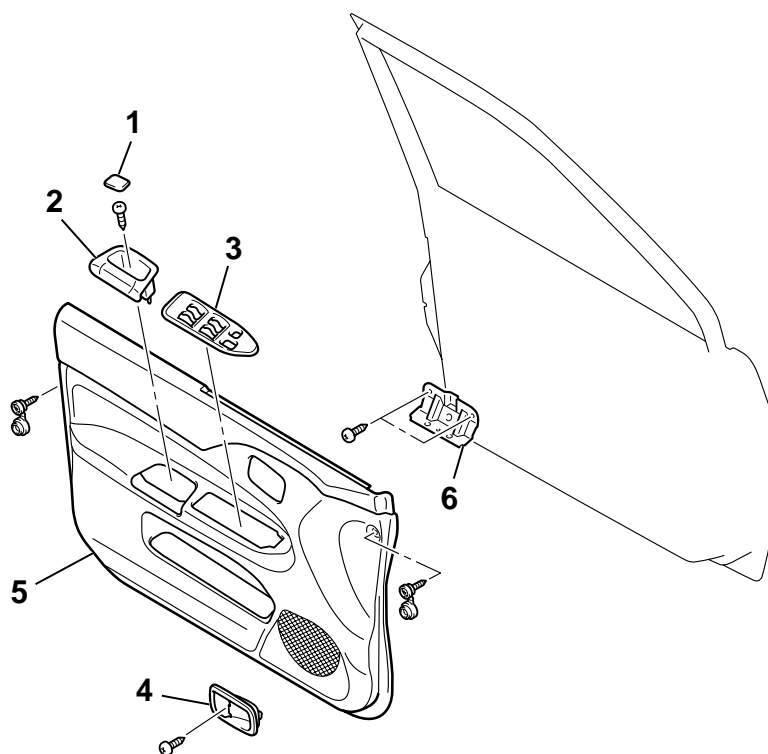


DOOR TRIM

REMOVAL AND INSTALLATION

M1521006400086

<FRONT DOOR TRIM>



AC210022AB

FRONT DOOR TRIM REMOVAL
STEPS

1. CAP
2. PULL HANDLE BOX
3. POWER WINDOW SWITCH PANEL ASSEMBLY
4. DOOR INSIDE HANDLE COVER

FRONT DOOR TRIM REMOVAL
STEPS (Continued)

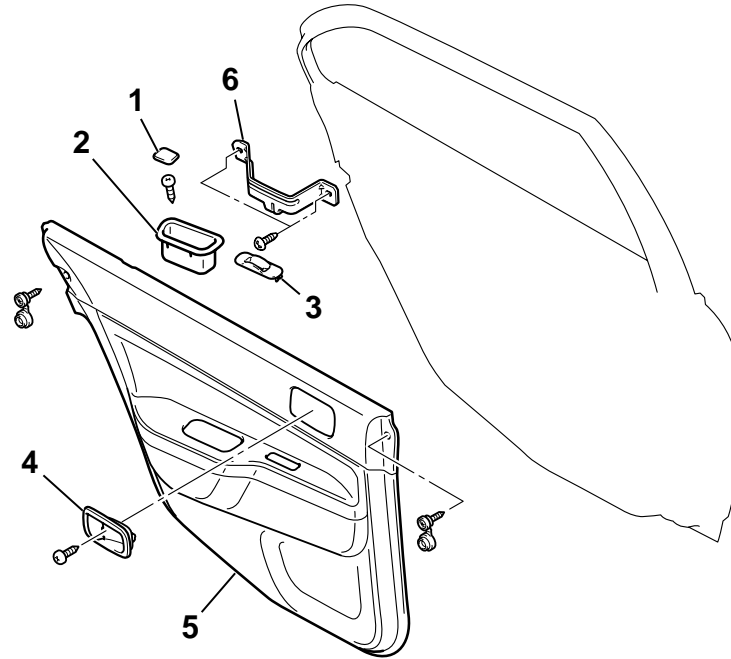
5. FRONT DOOR TRIM
6. FRONT DOOR PULL HANDLE BRACKET

Required Special Tool:

- MB990784: Ornament remover

<<A>>

<REAR DOOR TRIM>



AC210019AB

**REAR DOOR TRIM REMOVAL
STEPS**

1. CAP
2. PULL HANDLE BOX
3. POWER WINDOW SWITCH
PANEL ASSEMBLY
4. DOOR INSIDE HANDLE COVER

**REAR DOOR TRIM REMOVAL
STEPS (Continued)**

5. REAR DOOR TRIM
6. REAR DOOR PULL HANDLE
BRACKET

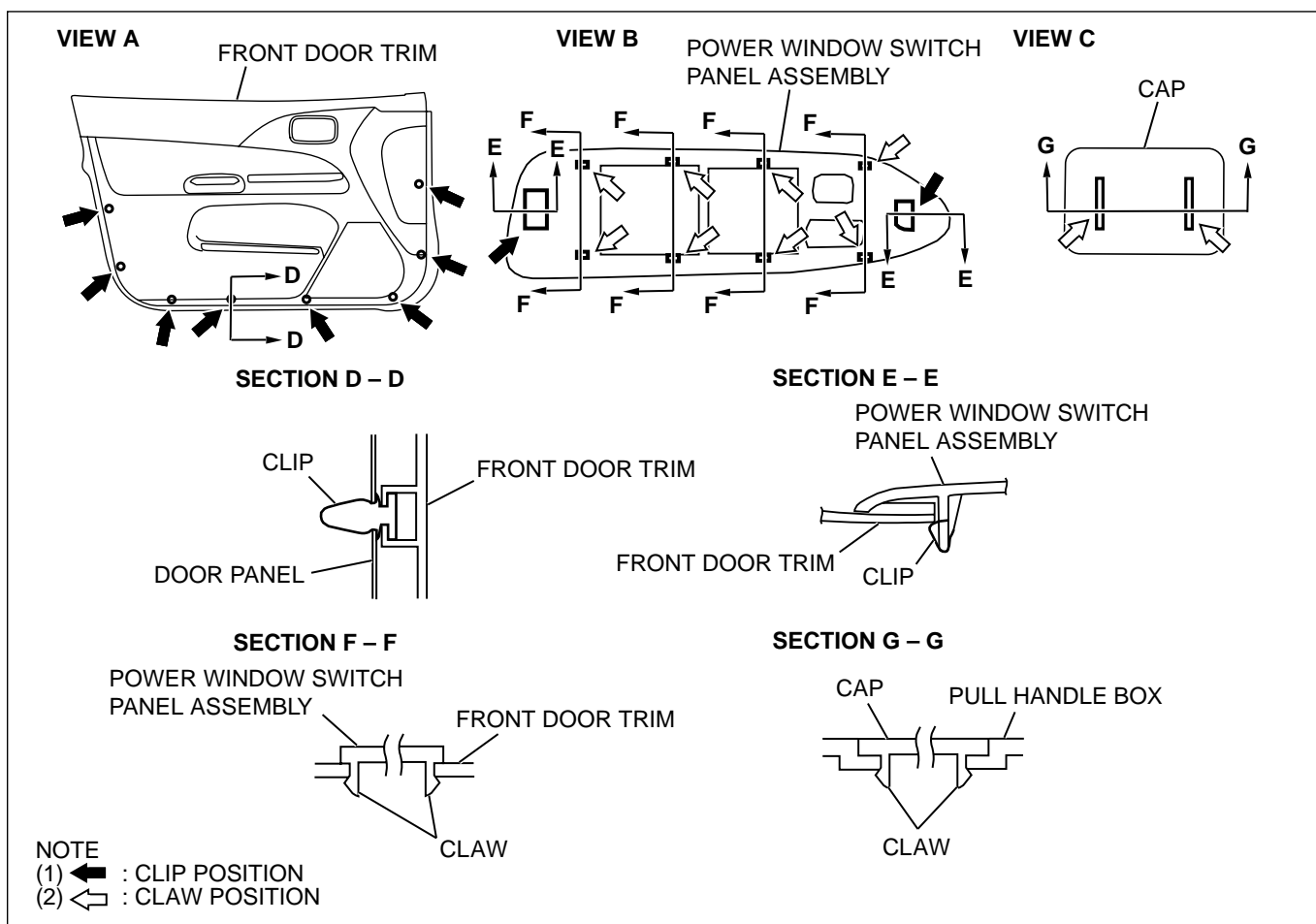
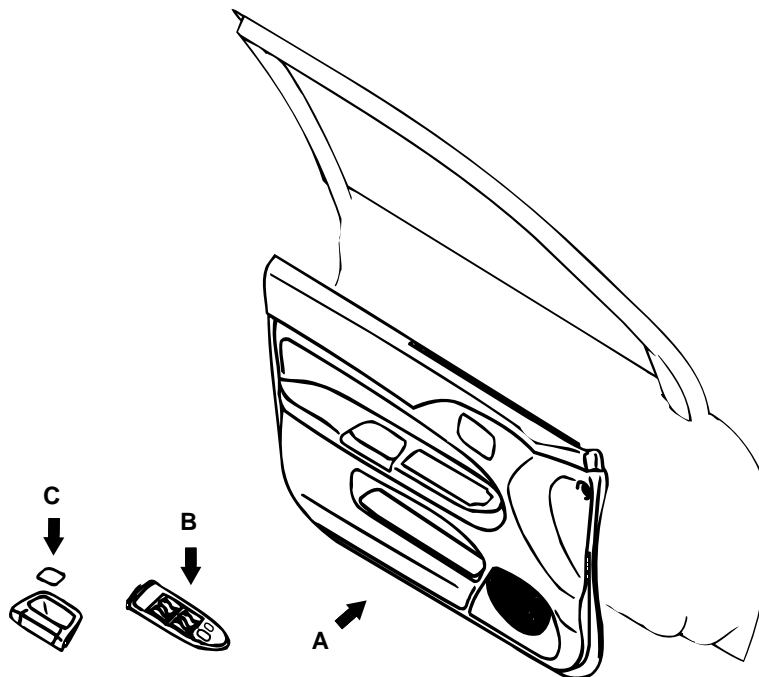
Required Special Tool:

- MB990784: Ornament remover

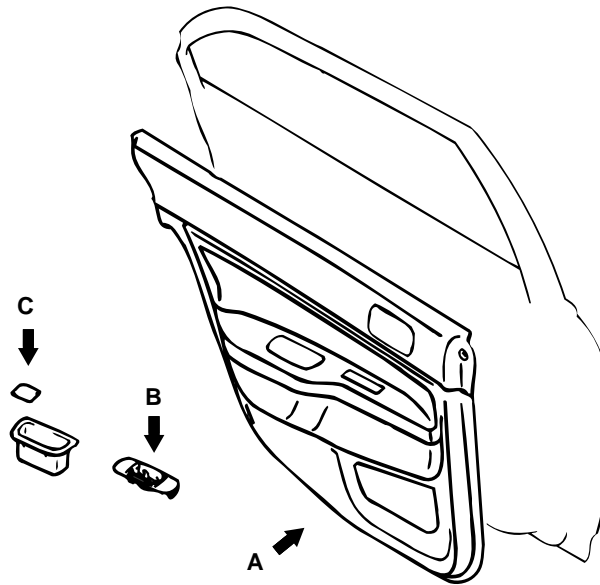
<<A>>

CLIP AND CLAW POSITIONS

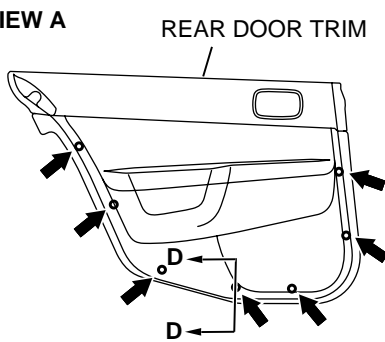
<FRONT DOOR TRIM>



AC210245AB



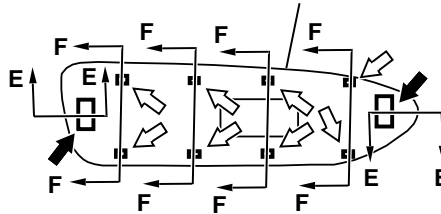
VIEW A



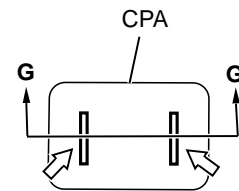
REAR DOOR TRIM

VIEW B

POWER WINDOW SWITCH
PANEL ASSEMBLY

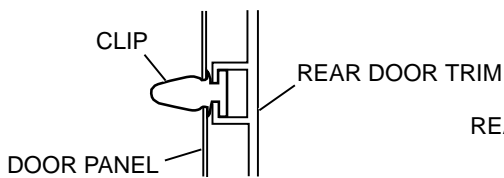


VIEW C

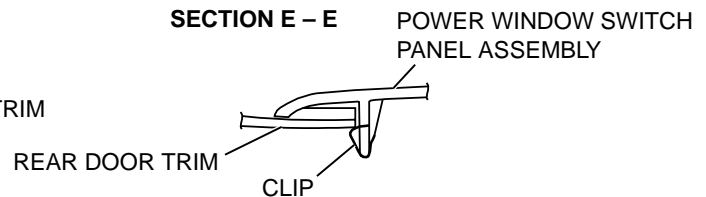


CPA

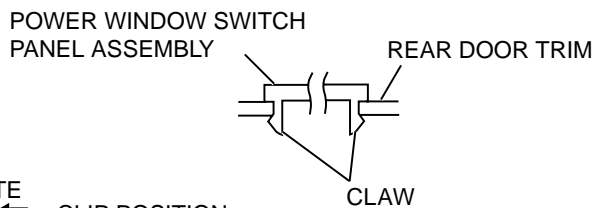
SECTION D - D



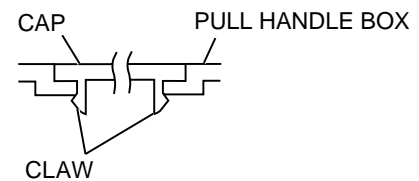
SECTION E - E



SECTION F - F



SECTION G - G



NOTE

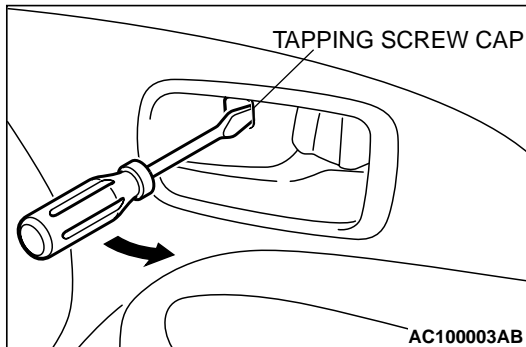
- (1) : CLIP POSITION
(2) : CLAW POSITION

AC211593AB

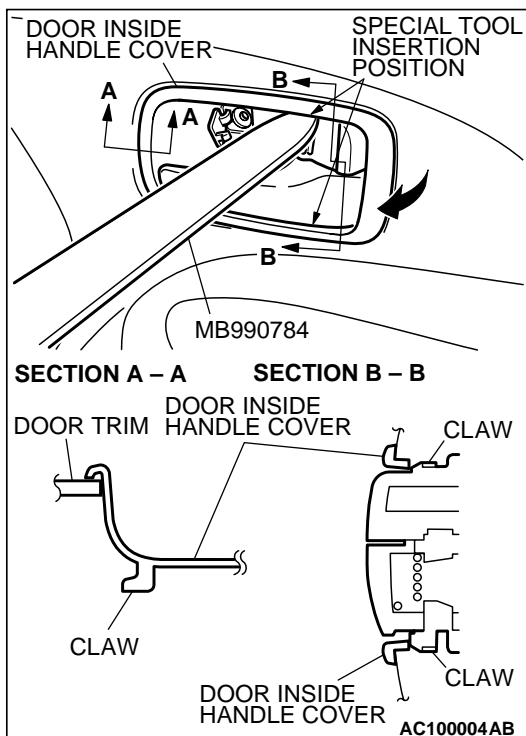
REMOVAL SERVICE POINT

<<A>> DOOR INSIDE HANDLE COVER REMOVAL

1. Insert a flat-tipped screwdriver into the rear end of the tapping screw cap on the door inside handle cover, and pry out the cap in the direction shown. Then remove the tapping screw.



2. Insert special tool MB990784 into the clearance between the door inside handle cover and the door inside handle, and disengage the claws of the door inside handle.
3. Insert special tool MB990784 into the rear end of the inside handle cover, and pry out the cover in the direction shown. Then remove the door inside handle cover.



HEADLINING

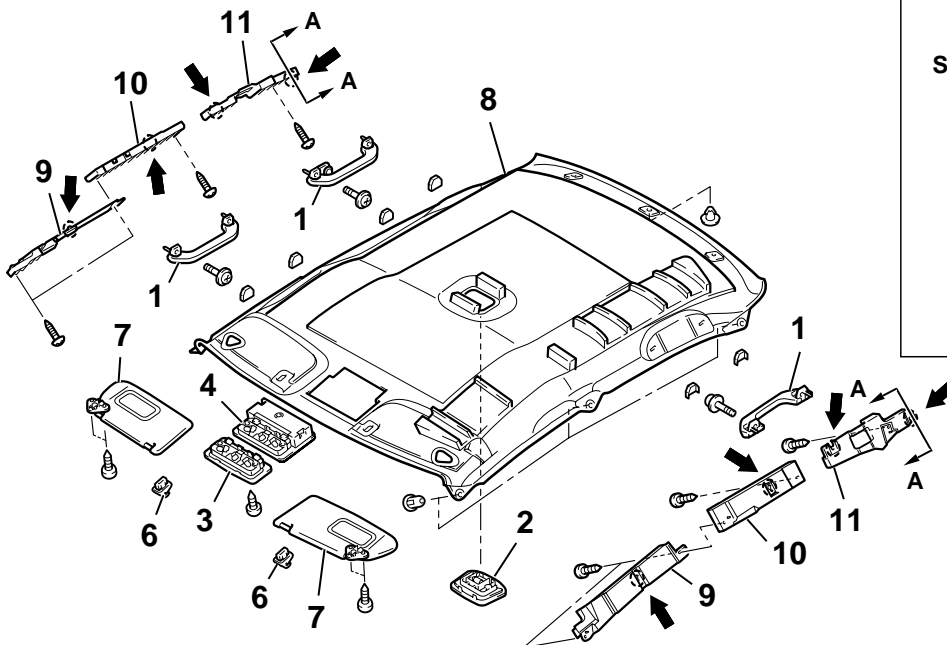
REMOVAL AND INSTALLATION

M1521001400382

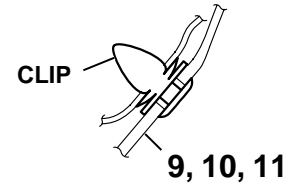
Pre-removal and Post-installation Operation

- Removal and Installation of Front Pillar Trim, Upper Center Pillar Trim, Rear Pillar Trim (Refer to P.52A-12.)

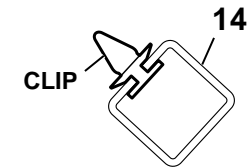
<VEHICLE WITHOUT SUNROOF>



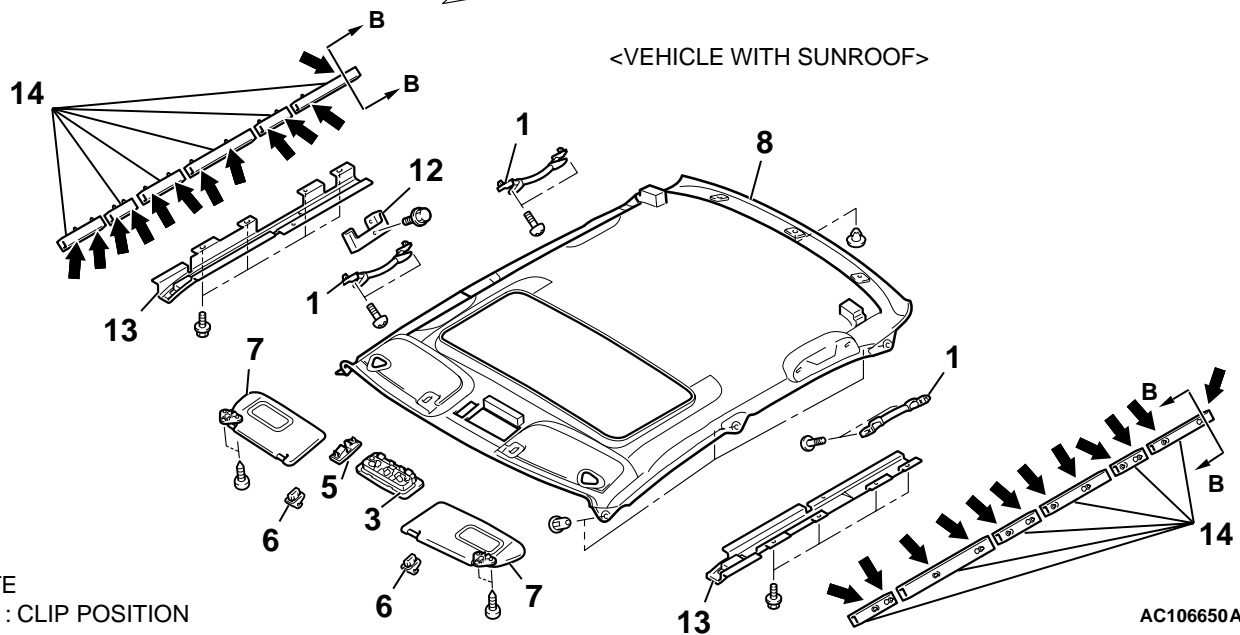
SECTION A — A



SECTION B — B



<VEHICLE WITH SUNROOF>



NOTE

← : CLIP POSITION

AC106650AC

REMOVAL STEPS

1. ASSIST GRIP
2. REAR DOME LIGHT ASSEMBLY
<VEHICLE WITHOUT SUNROOF>
3. FRONT DOME LIGHT
4. FRONT DOME LIGHT WITH
SUNGLASSES POCKET <VEHICLE
WITH FRONT DOME LIGHT WITH
SUN GRASSES POCKET>
5. SUNROOF SWITCH COVER
<VEHICLE WITH SUNROOF>
6. SUN VISOR HOLDER
7. SUN VISOR ASSEMBLY
 - FRONT FLOOR CONSOLE
ASSEMBLY (REFER TO [P.52A-8.](#))

<<A>>

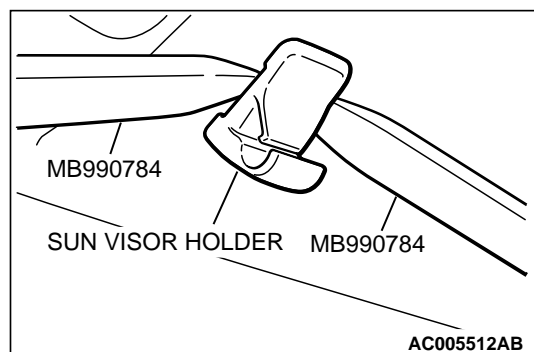
<>

REMOVAL STEPS (Continued)

8. HEADLINING
9. SIDE ROOF BOX, FRONT
<VEHICLE WITHOUT SUNROOF>
10. SIDE ROOF BOX, CENTER
<VEHICLE WITHOUT SUNROOF>
11. SIDE ROOF BOX, REAR <VEHICLE
WITHOUT SUNROOF>
12. ASSIST GRIP BRACKET <VEHICLE
WITH SUNROOF>
13. ROOF E/A BRACKET <VEHICLE
WITH SUNROOF>
14. ENERGY ABSORBER TUBE
<VEHICLE WITH SUNROOF>

REMOVAL SERVICE POINTS**<<A>> SUN VISOR HOLDER REMOVAL**

Insert the special tool into sides claws of the sun visor holder through the both sides of the sun visor holder to remove the hinges.

**<> HEADLINING REMOVAL**

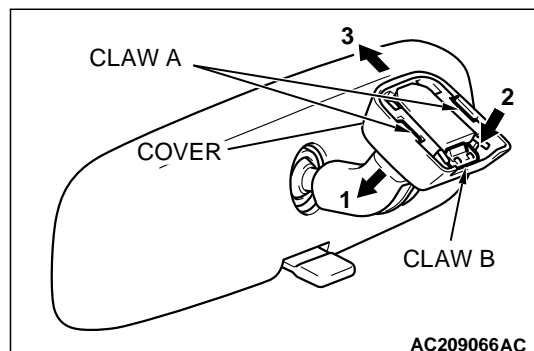
Bend the headlining to remove from the front passenger's door.

INSIDE REAR VIEW MIRROR

M1521002600152

REMOVAL SERVICE POINT

1. Disengage claw A and lower the cover in the arrow 1 direction.
2. Push claw B in the arrow 2 direction to unlock, and pull out the mirror in the arrow 3 direction.



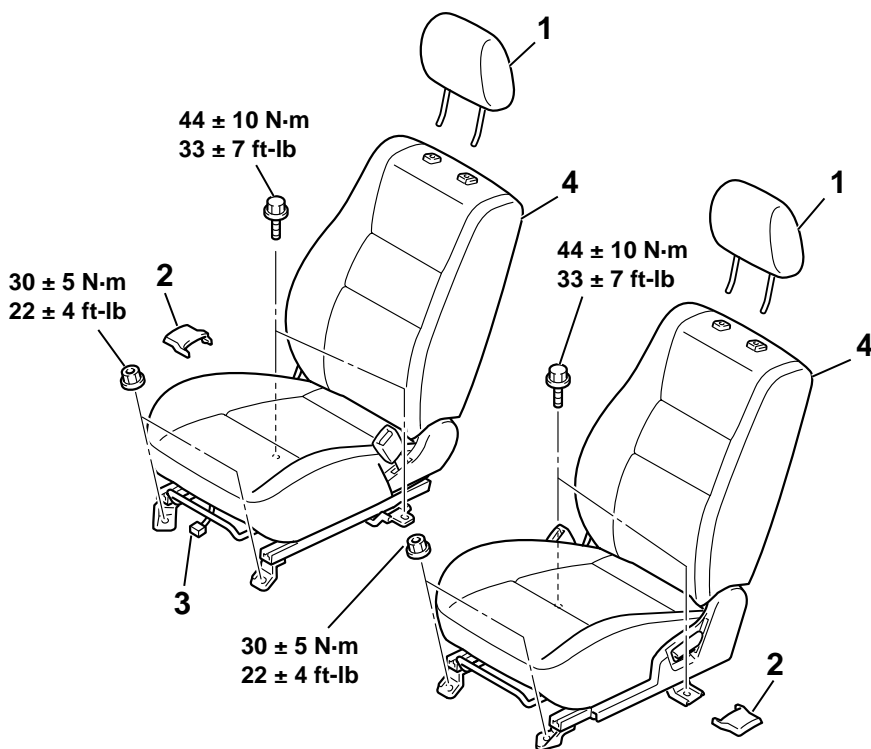
FRONT SEAT ASSEMBLY

REMOVAL AND INSTALLATION

M1522001300388

WARNING

Before removing the front seat assembly, refer to **GROUP 52B, Service Precautions P.52B-16** and **Air Bag Module and Clock Spring P.52B-205**.



AC005513AB

1. HEAD RESTRAINT

FRONT SEAT ASSEMBLY REMOVAL STEPS

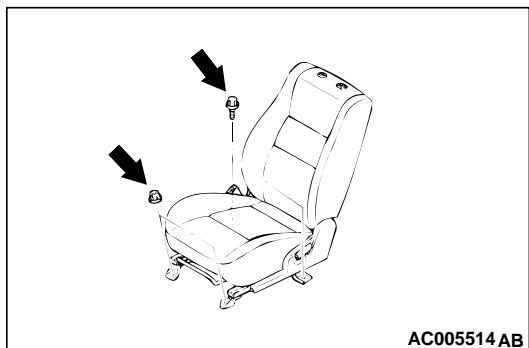
2. FRONT SEAT ANCHOR COVER
3. HARNESS CONNECTOR

>>A<< 4. FRONT SEAT ASSEMBLY

INSTALLATION SERVICE POINTS

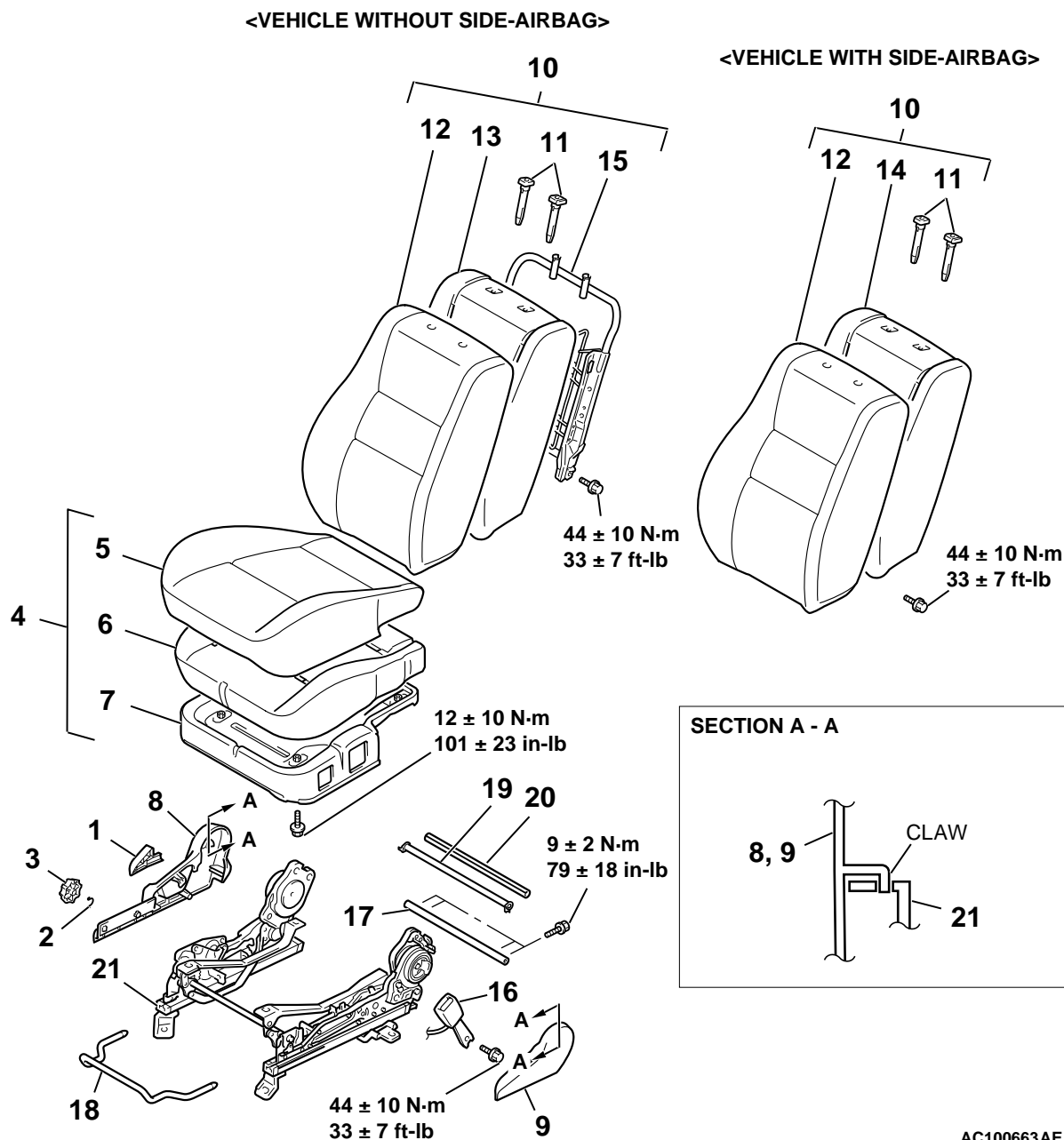
>>A<< FRONT SEAT ASSEMBLY INSTALLATION

1. Temporarily tighten the nuts and bolts in all mounting locations shown in the illustration with no load applied to the front seat cushion and check the operation of the seat slide.
2. Tighten the nuts and bolts in all mounting locations to the specified torque.



DISASSEMBLY AND ASSEMBLY

M1522001500478



AC100663AE

DISASSEMBLY STEPS

1. RECLINING KNOB
2. PIN
3. HEIGHT ADJUSTER KNOB
4. FRONT SEAT CUSHION ASSEMBLY
5. FRONT SEAT CUSHION COVER
6. FRONT SEAT CUSHION PAD
7. FRONT SEAT CUSHION FRAME
8. RECLINING COVER
9. SHIELD COVER
10. FRONT SEATBACK ASSEMBLY
11. HEADREST GUIDE

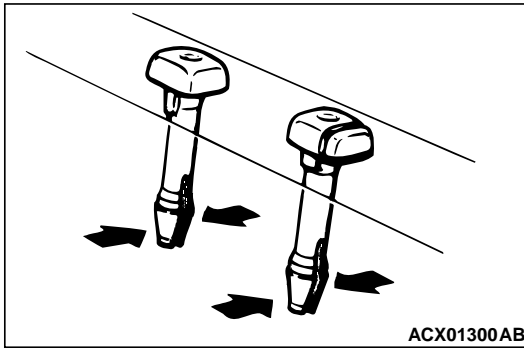
DISASSEMBLY STEPS (Continued)

12. FRONT SEATBACK COVER
13. FRONT SEATBACK PAD
14. FRONT SEATBACK PAD AND FRAME ASSEMBLY
15. FRONT SEATBACK FRAME
16. INNER SEAT BELT
17. SHAFT
18. SEAT SLIDE HANDLE
19. SHAFT
20. SHAFT PROTECTOR
21. SEAT SLIDE ADJUSTER

<<A>>

REMOVAL SERVICE POINT

<<A>> HEADREST GUIDE REMOVAL

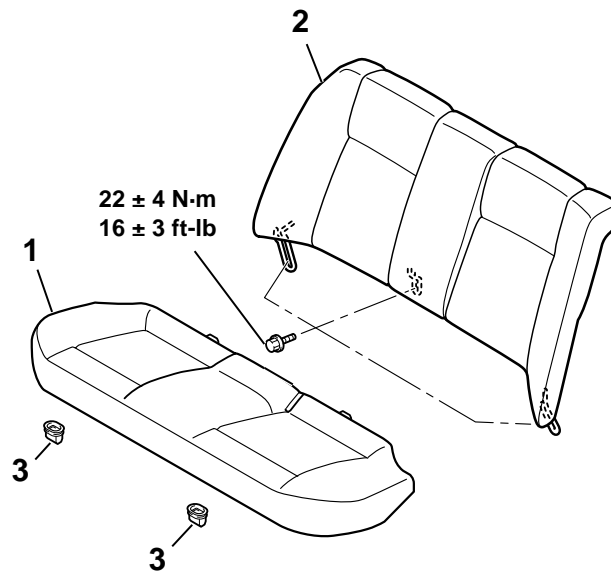


REAR SEAT ASSEMBLY

REMOVAL AND INSTALLATION

M1522001800082

<BENCH SEAT>

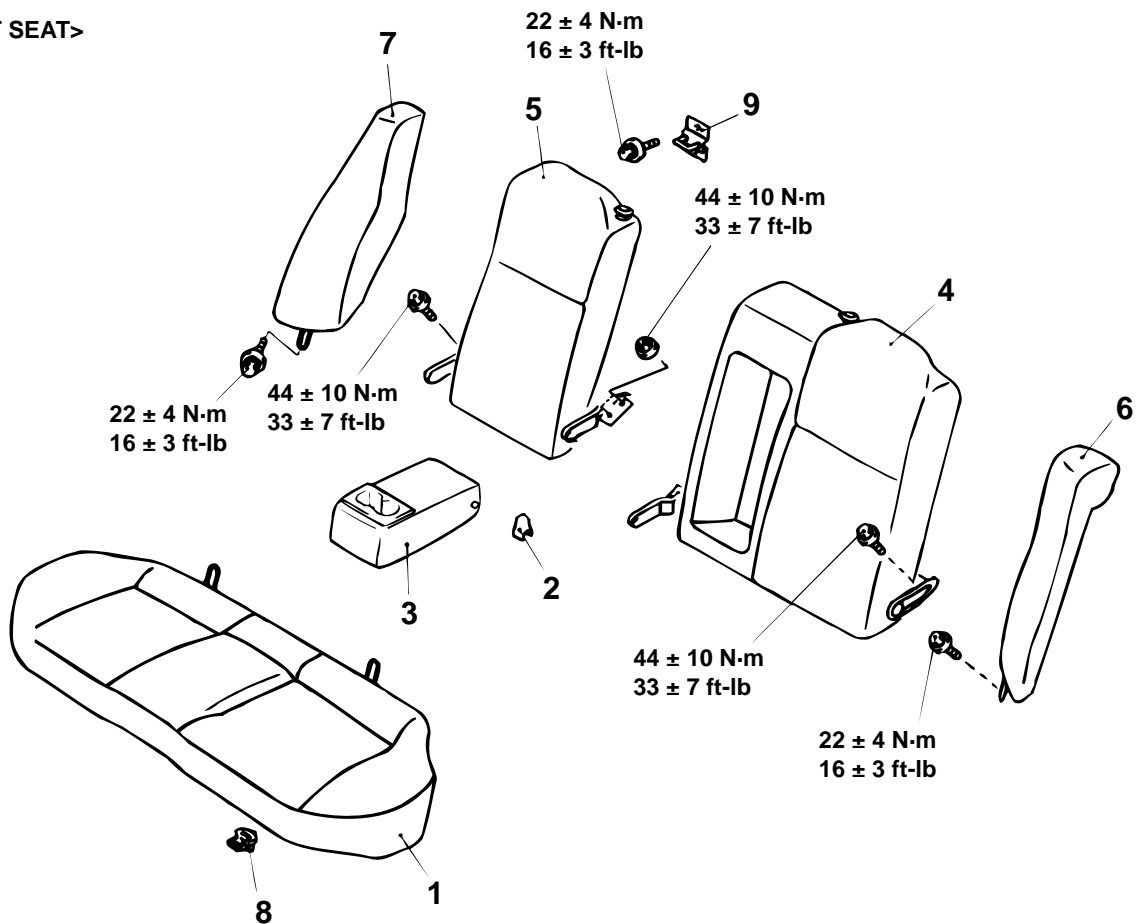


AC005517AB

- >>C<< 1. **REMOVAL STEPS**
REAR SEAT CUSHION
ASSEMBLY

- >>A<< 2. **REMOVAL STEPS (Continued)**
REAR SEATBACK ASSEMBLY
3. REAR SEAT HOOK

<SPRIT SEAT>



AC005518AB

REMOVAL STEPS

- >>C<< 1. REAR SEAT CUSHION ASSEMBLY
 2. ARMREST SPACER
 3. REAR SEAT ARMREST
 >>B<< 4. REAR SEATBACK ASSEMBLY LH
 >>B<< 5. REAR SEATBACK ASSEMBLY RH

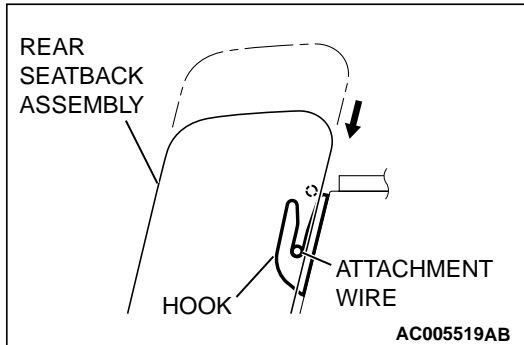
REMOVAL STEPS (Continued)

- >>A<< 6. REAR SEATBACK SIDE ASSEMBLY LH
 >>A<< 7. REAR SEATBACK SIDE ASSEMBLY RH
 8. REAR SEAT HOOK
 9. STRIKER

INSTALLATION SERVICE POINTS

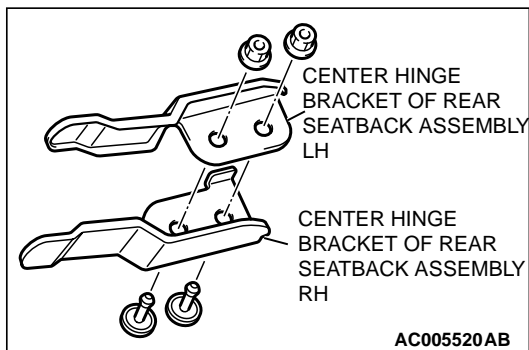
>>A<< INSTALLATION OF REAR SEATBACK SIDE ASSEMBLY LH/REAR SEATBACK SIDE ASSEMBLY RH

Press the rear seatback side assembly in the direction shown in the illustration and fit the attachment wire into the hook securely to install the rear seatback side assembly.



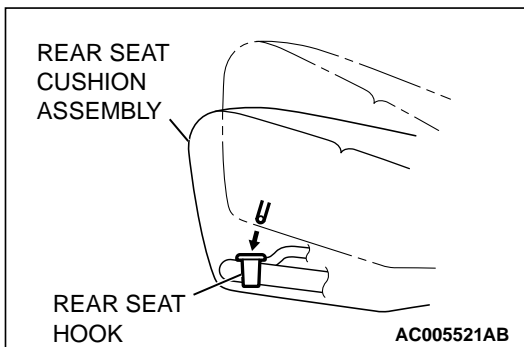
>>B<< INSTALLATION OF REAR SEATBACK ASSEMBLY LH/REAR SEATBACK ASSEMBLY RH

Place the center hinge bracket of the rear seatback assembly LH on top of the center hinge bracket of the rear seatback assembly RH for installation.



>>C<< INSTALLATION OF REAR SEAT CUSHION ASSEMBLY

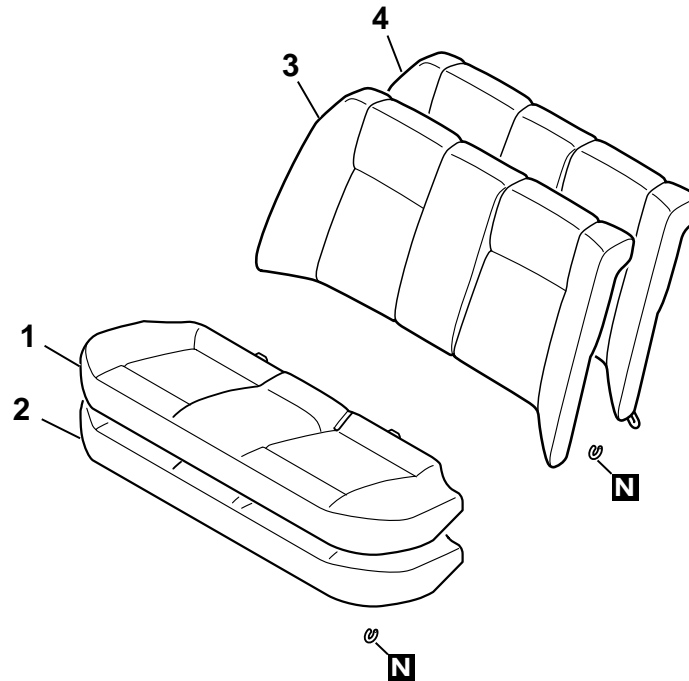
Fit the rear seat cushion into the rear seat hook securely.



DISASSEMBLY AND ASSEMBLY

M1522002000108

<BENCH SEAT>



AC005522AB

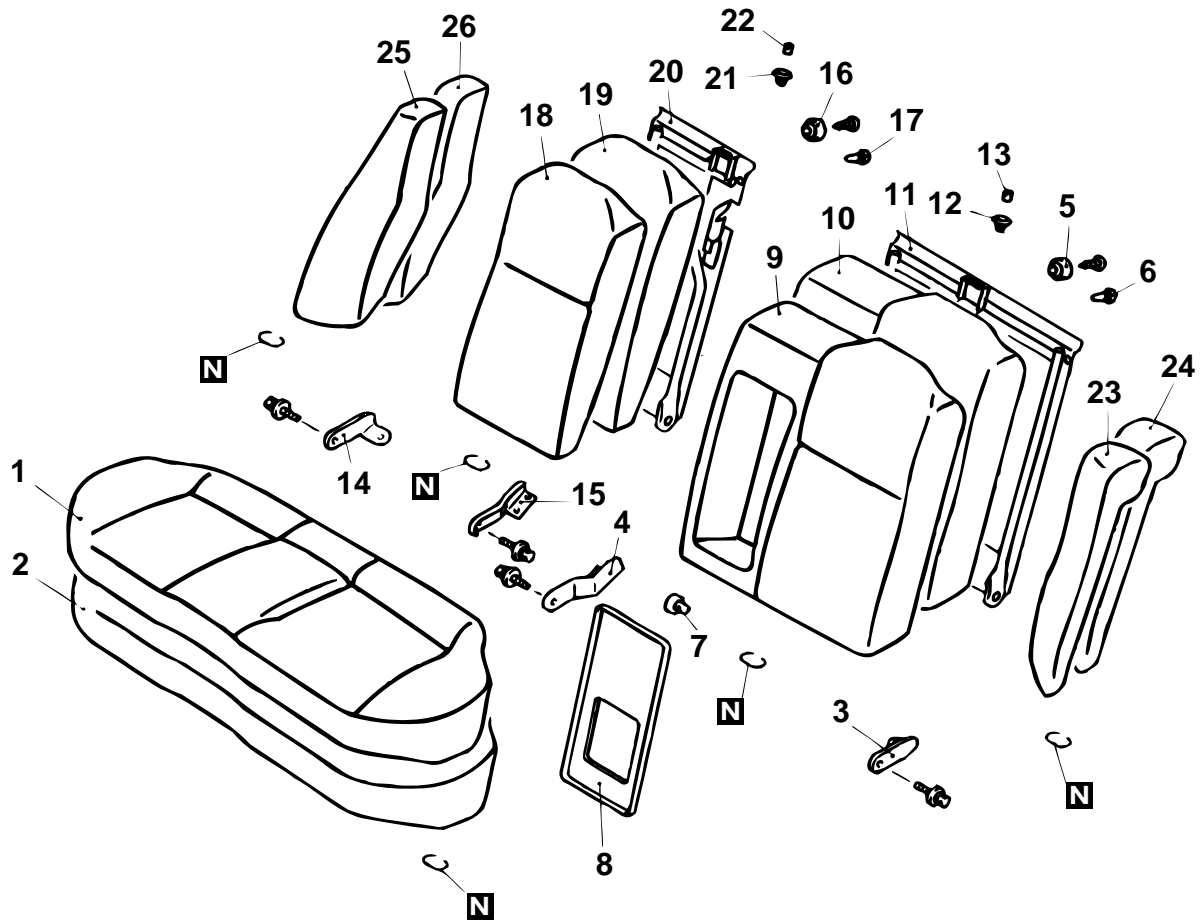
DISASSEMBLY STEPS

1. REAR SEAT CUSHION COVER
2. REAR SEAT CUSHION PAD

DISASSEMBLY STEPS

3. REAR SEATBACK COVER
4. REAR SEATBACK PAD

<SPLIT SEAT>



AC005523AB

DISASSEMBLY STEPS

1. REAR SEAT CUSHION COVER
2. REAR SEAT CUSHION PAD
3. SIDE HINGE BRACKET
4. CENTER HINGE BRACKET
5. REAR SEATBACK DAMPER
6. CLIP
7. ARMREST BUSH
8. REAR SEATBACK ARMREST BOARD
9. REAR SEATBACK COVER LH
10. REAR SEATBACK PAD LH
11. REAR SEATBACK FRAME LH
12. GARNISH
13. KNOB
14. SIDE HINGE BRACKET

DISASSEMBLY STEPS

15. CENTER HINGE BRACKET
16. REAR SEATBACK DAMPER
17. CLIP
18. REAR SEATBACK COVER RH
19. REAR SEATBACK PAD RH
20. REAR SEATBACK FRAME RH
21. GARNISH
22. KNOB
23. REAR SEATBACK SIDE COVER LH
24. REAR SEATBACK SIDE PAD LH
25. REAR SEATBACK SIDE COVER RH
26. REAR SEATBACK SIDE PAD RH

FRONT SEAT BELT

REMOVAL AND INSTALLATION

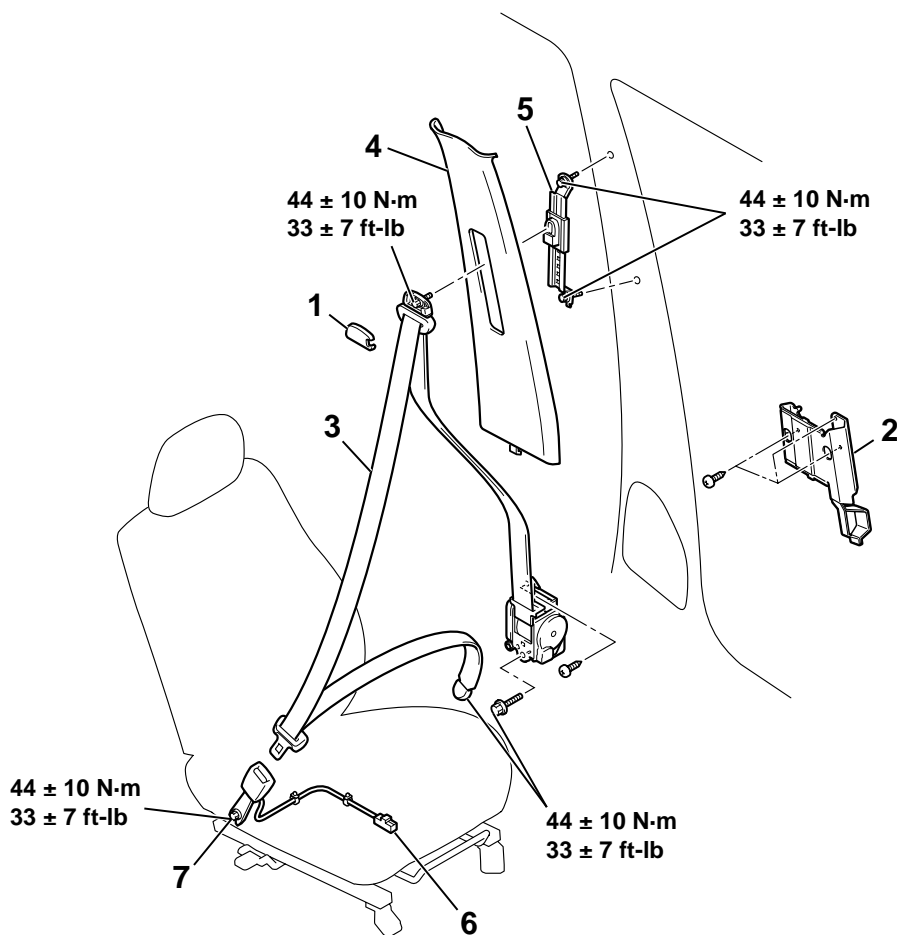
M1523001300381

CAUTION

SRS: Before removing and installing the seat belts with pre-tensioner, refer to GROUP 52B – SRS Service Precautions [P.52B-16](#) and Seat Belt with Pre-tensioner [P.52B-222](#).

Pre-removal and Post-installation Operation

- Turn the ignition key to the LOOK (OFF) position.
- Disconnect the negative battery terminal.



AC308250 AB

OUTER SEAT BELT REMOVAL STEPS

1. SASH COVER GUIDE
- LOWER CENTER PILLAR TRIM (REFER TO [P.52A-12](#).)
2. BRACKET
3. OUTER SEAT BELT (REFER TO GROUP 52B, SEAT BELT WITH PRE-TENSIONER [P.52B-218](#).)

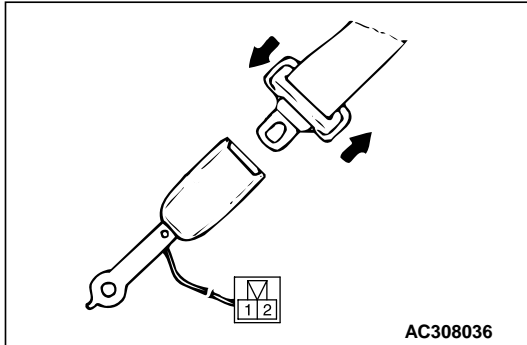
OUTER SEAT BELT REMOVAL STEPS (Continued)

4. UPPER CENTER PILLAR TRIM (REFER TO [P.52A-12](#).)
 5. ADJUSTABLE SEAT BELT ANCHOR
- INNER SEAT BELT REMOVAL STEPS**
6. HARNESS CONNECTOR
 - SHIELD COVER (REFER TO [P.52A-22](#).)
 7. INNER SEAT BELT

INSPECTION

M1523004400149

SEAT BELT BUCKLE SWITCH CONTINUITY CHECK

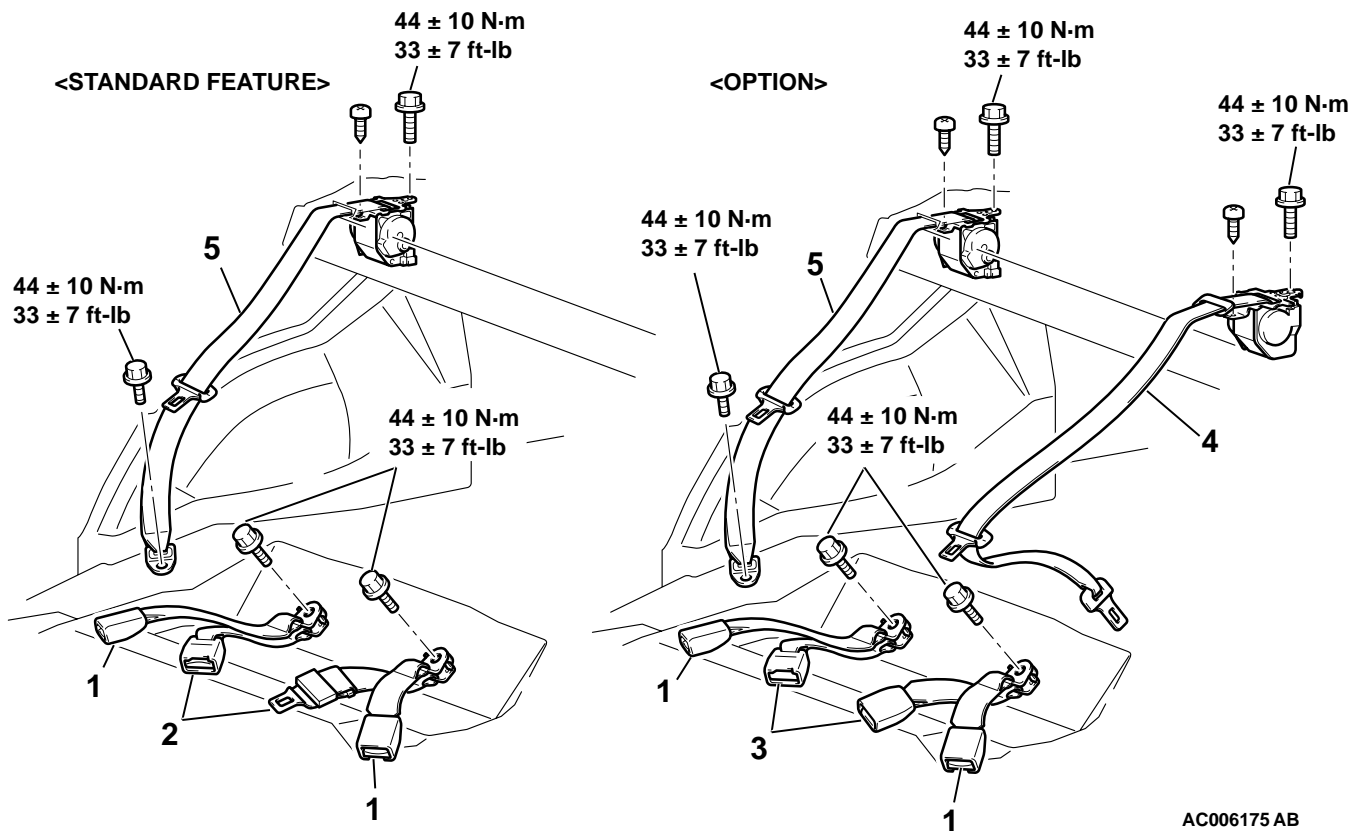


ITEMS	TESTER CONNECTION	SPECIFIED CONDITION
Fastened seat belt	1 – 2	Open circuit
Unfastened seat belt	1 – 2	Less than 2 ohms

REAR SEAT BELT

REMOVAL AND INSTALLATION

M1523001600081



REMOVAL STEPS

- REAR SEAT CUSHION ASSEMBLY (REFER TO [P.52A-23.](#))
- REAR SEATBACK ASSEMBLY (REFER TO [P.52A-23.](#))
- REAR SHELF TRIM (REFER TO [P.52A-12.](#))

REMOVAL STEPS (Continued)

1. INNER SEAT BELT
2. CENTER SEAT BELT
3. CENTER SEAT BELT, INNER
4. CENTER SEAT BELT, OUTER
5. OUTER SEAT BELT

SPECIFICATIONS**FASTENER TIGHTENING SPECIFICATIONS**

M1521004100238

ITEM	SPECIFICATION
TRIMS	
Child restraint fitting bolt	22 ± 4 N·m (16 ± 3 ft-lb)
FRONT SEAT	
Front seatback frame bolt	44 ± 10 N·m (33 ± 7 ft-lb)
Front seatback pad and frame assembly bolt	44 ± 10 N·m (33 ± 7 ft-lb)
Front seat bolt	44 ± 10 N·m (33 ± 7 ft-lb)
Front seat cushion frame bolt	12 ± 10 N·m (101 ± 23 in-lb)
Front seat nut	30 ± 5 N·m (22 ± 4 ft-lb)
Front seat shaft bolt	9 ± 2 N·m (79 ± 18 in-lb)
FRONT SEAT BELT	
Front seat belt adjustable seat belt anchor	44 ± 10 N·m (33 ± 7 ft-lb)
Front seat belt bolt	44 ± 10 N·m (33 ± 7 ft-lb)
REAR SEAT	
Rear seatback assembly bolt <Bench seat>	22 ± 4 N·m (16 ± 3 ft-lb)
Rear seatback assembly bolt <Split seat>	44 ± 10 N·m (33 ± 7 ft-lb)
Rear seatback side assembly bolt	22 ± 4 N·m (16 ± 3 ft-lb)
Rear seat striker bolt	22 ± 4 N·m (16 ± 3 ft-lb)
REAR SEAT BLET	
Rear seat belt bolt	44 ± 10 N·m (33 ± 7 ft-lb)