

GROUP 80B

SPLICE LOCATIONS

CONTENTS

HOW TO READ SPLICE LOCATIONS	80B-2	ENGINE AND TRANSAXLE	
INDEX.....	80B-3	<2.4L ENGINE> .....	80B-7
ENGINE COMPARTMENT.....	80B-5	DASH PANEL.....	80B-8
ENGINE AND TRANSAXLE		FLOOR AND ROOF .....	80B-12
<2.0L ENGINE> .....	80B-6	DOOR .....	80B-13
		LUGGAGE COMPARTMENT.....	80B-14

# HOW TO READ SPLICE LOCATIONS

M1802000100294

"Splice locations" describes splice points of each wiring harness on an actual vehicle.

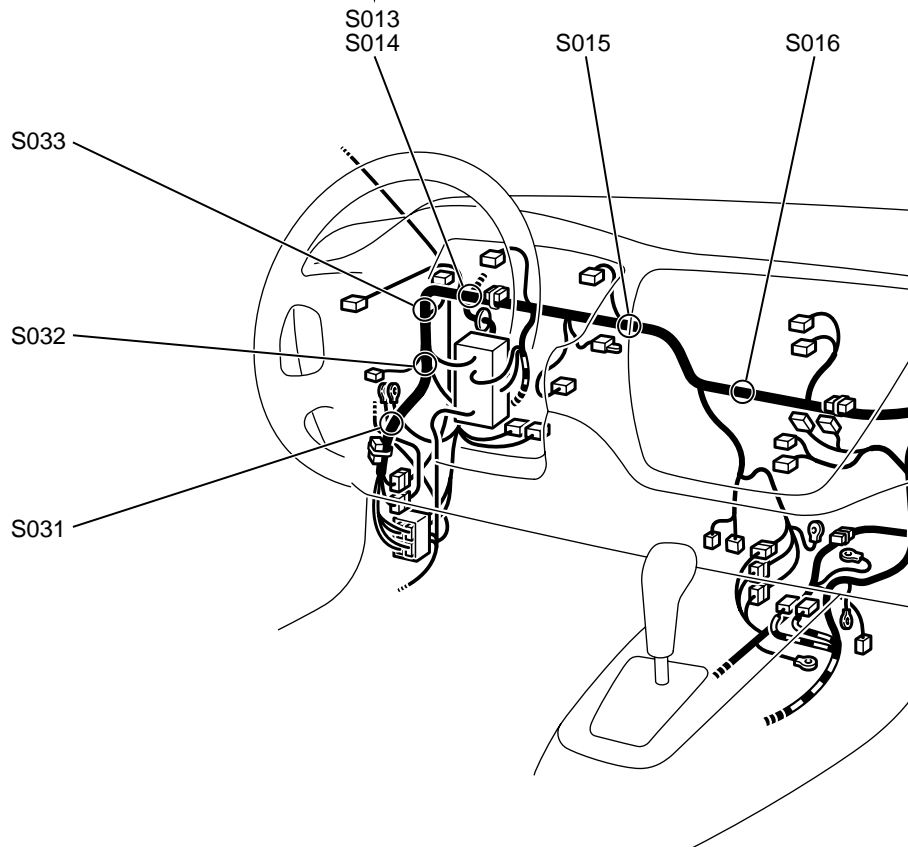
Indicates a splice point number.

The splice point numbers are identical to those in "CIRCUIT DIAGRAMS," making them easy to use. In addition, the splice point numbers are usually numbered clockwise.

Example: S 013

Sequential number

Prefix meaning splice point



AC100213AB

# INDEX

M1802000900739

This index shows the page numbers where the splice locations are.

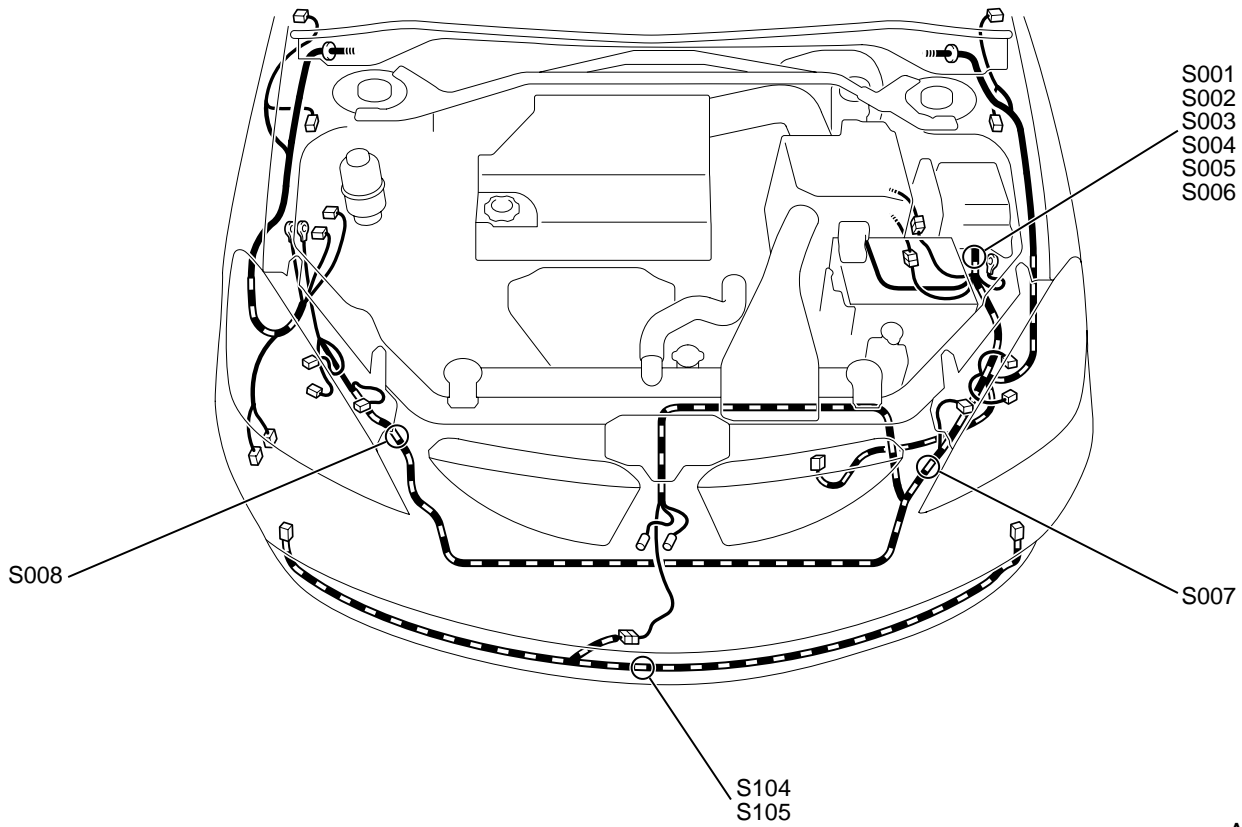
SPLICE LOCATION NO.	PAGE	SPLICE LOCATION NO.	PAGE	SPLICE LOCATION NO.	PAGE	SPLICE LOCATION NO.	PAGE
S001	P.80B-5	S028	P.80B-7	S055	P.80B-8	S082	P.80B-8
S002	P.80B-5	S029	P.80B-7	S056	P.80B-8	S083	P.80B-8
S003	P.80B-5	S030	P.80B-7	S057	P.80B-8	S084	P.80B-8
S004	P.80B-5	S031	P.80B-8	S058	P.80B-8	S085	P.80B-8
S005	P.80B-5	S032	P.80B-8	S059	P.80B-8	S086	P.80B-8
S006	P.80B-5	S033	P.80B-8	S060	P.80B-8	S087	P.80B-8
S007	P.80B-5	S034	P.80B-8	S061	P.80B-8	S088	P.80B-8
S008	P.80B-5	S035	P.80B-8	S062	P.80B-8	S089	P.80B-8
S009	P.80B-6	S036	P.80B-8	S063	P.80B-8	S090	P.80B-12
S010	P.80B-6	S037	P.80B-8	S064	P.80B-8	S091	P.80B-12
S011	P.80B-6	S038	P.80B-8	S065	P.80B-8	S092	P.80B-12
S012	P.80B-6	S039	P.80B-8	S066	P.80B-8	S093	P.80B-12
S013	P.80B-6	S040	P.80B-8	S067	P.80B-8	S094	P.80B-12
S014	P.80B-6	S041	P.80B-8	S068	P.80B-8	S095	P.80B-12
S015	P.80B-6	S042	P.80B-8	S069	P.80B-8	S096	P.80B-12
S016	P.80B-6	S043	P.80B-8	S070	P.80B-8	S097	P.80B-12
S017	P.80B-6	S044	P.80B-8	S071	P.80B-8	S098	P.80B-12
S018	P.80B-6	S045	P.80B-8	S072	P.80B-8	S099	P.80B-12
S019	P.80B-7	S046	P.80B-8	S073	P.80B-8	S100	P.80B-13
S020	P.80B-7	S047	P.80B-8	S074	P.80B-8	S101	P.80B-13
S021	P.80B-7	S048	P.80B-8	S075	P.80B-8	S102	P.80B-13
S022	P.80B-7	S049	P.80B-8	S076	P.80B-8	S103	P.80B-14
S023	P.80B-7	S050	P.80B-8	S077	P.80B-8	S104	P.80B-5
S024	P.80B-7	S051	P.80B-8	S078	P.80B-8	S105	P.80B-5
S025	P.80B-7	S052	P.80B-8	S079	P.80B-8		
S026	P.80B-7	S053	P.80B-8	S080	P.80B-8		
S027	P.80B-7	S054	P.80B-8	S081	P.80B-8		

---

## NOTES

# ENGINE COMPARTMENT

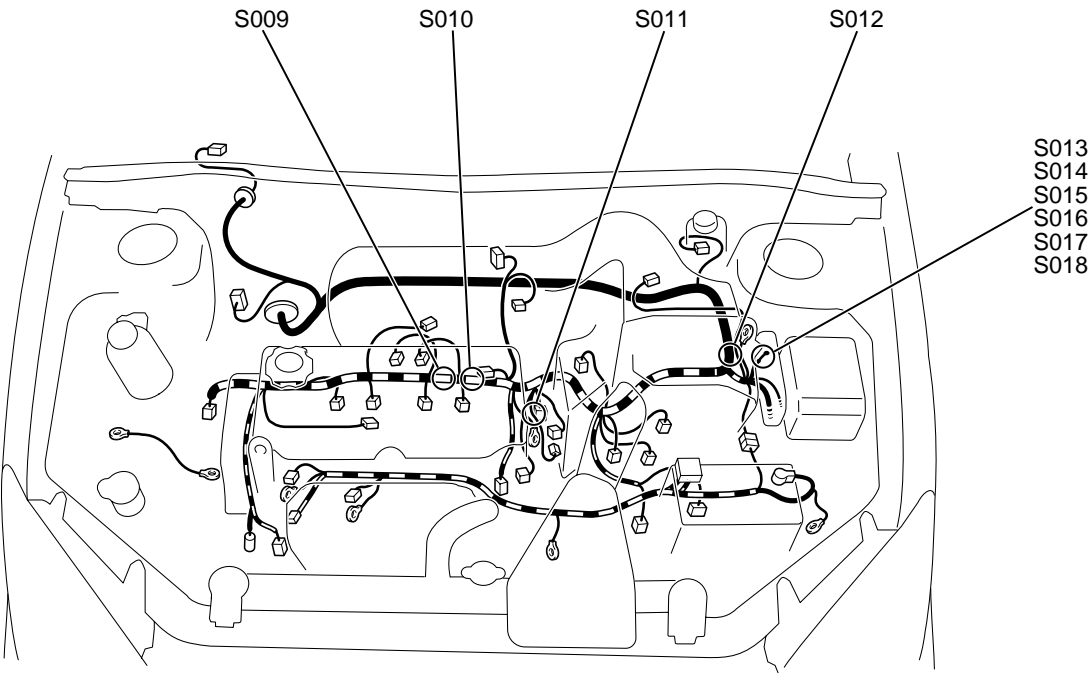
M1802000200592



AC307209AB

ENGINE AND TRANSAXLE <2.0L ENGINE>

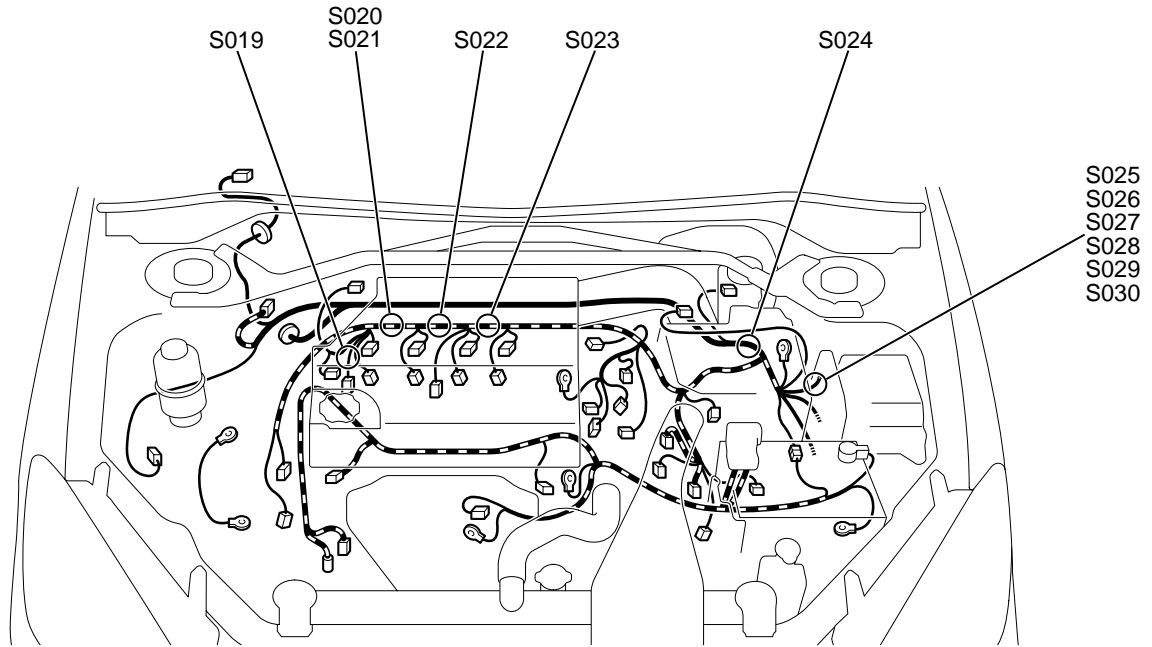
M1802001400447



AC307210AB

## ENGINE AND TRANSAXLE <2.4L ENGINE>

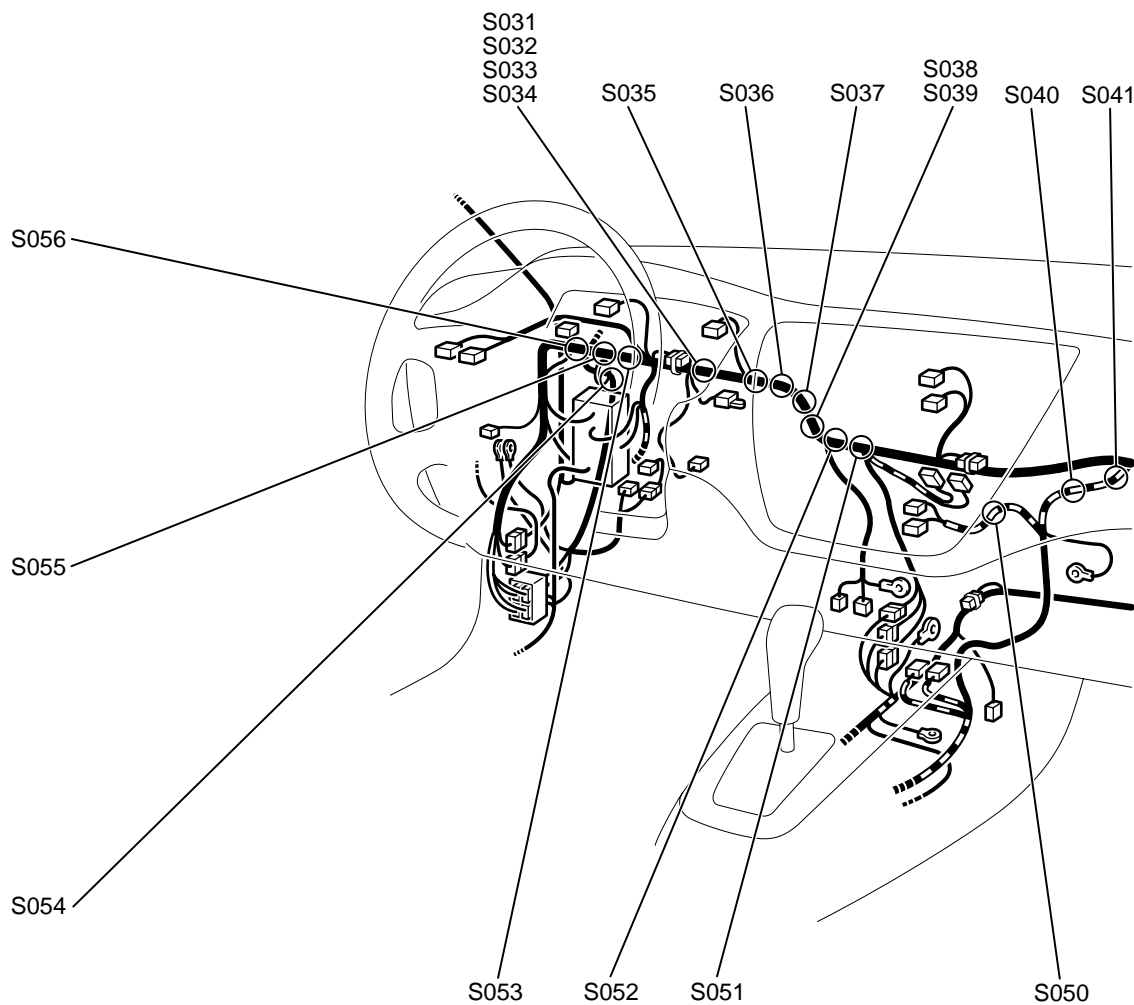
M1802001400470



AC307211AB

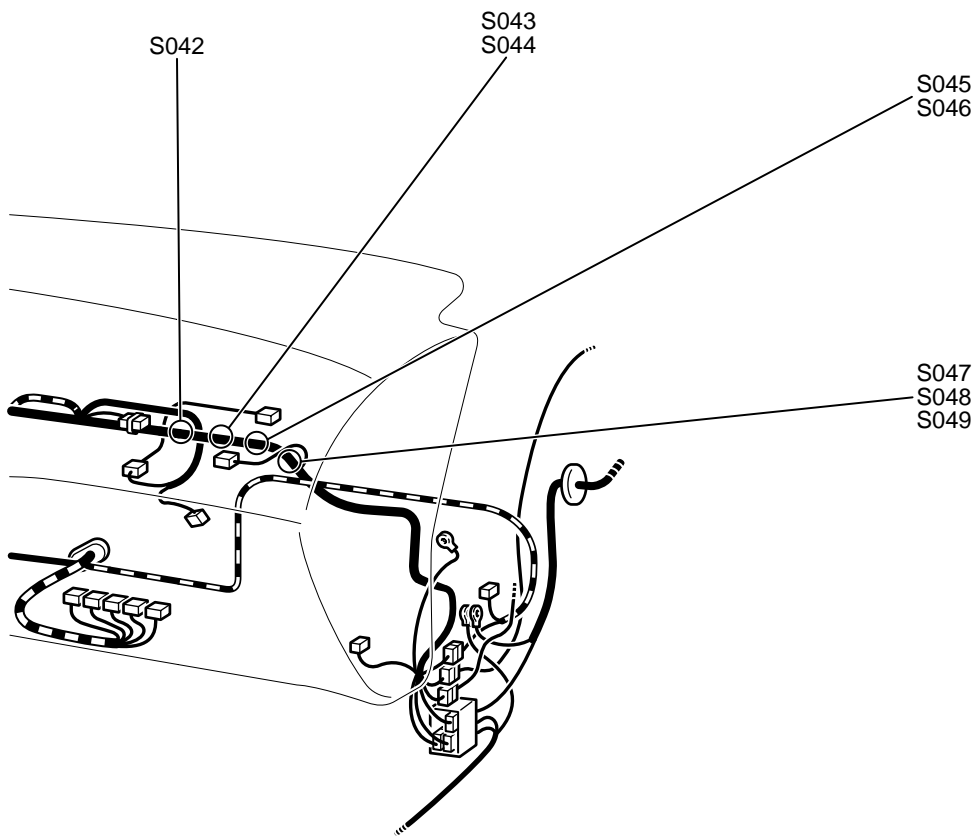
## DASH PANEL

M1802000300630



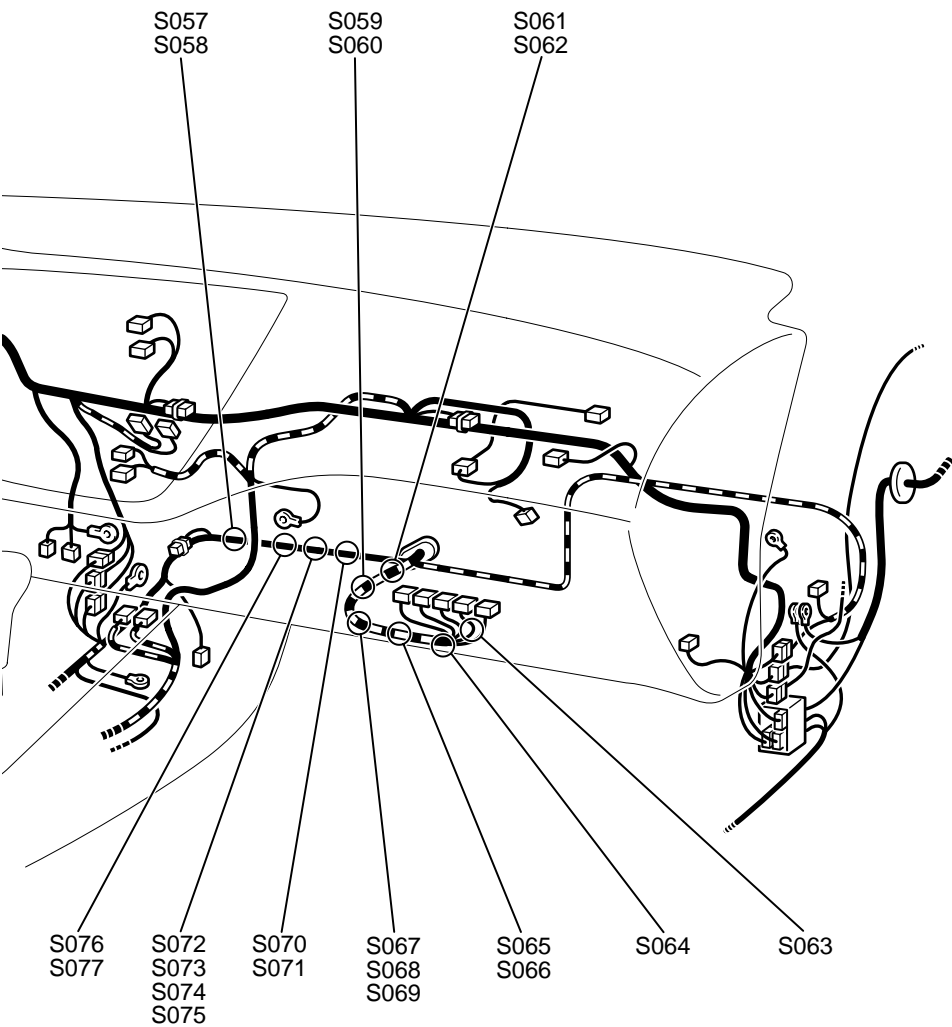
AC307212AB





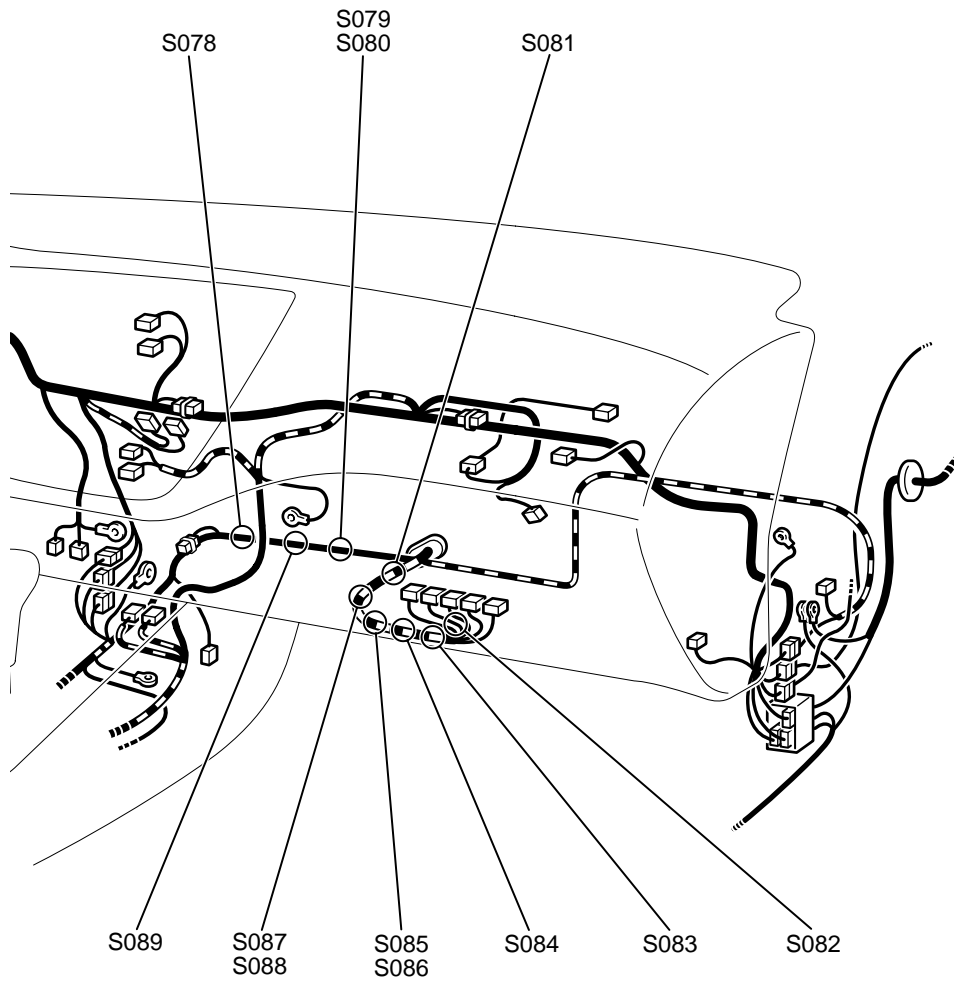
AC307213AB

2.0L ENGINE



AC307272AB

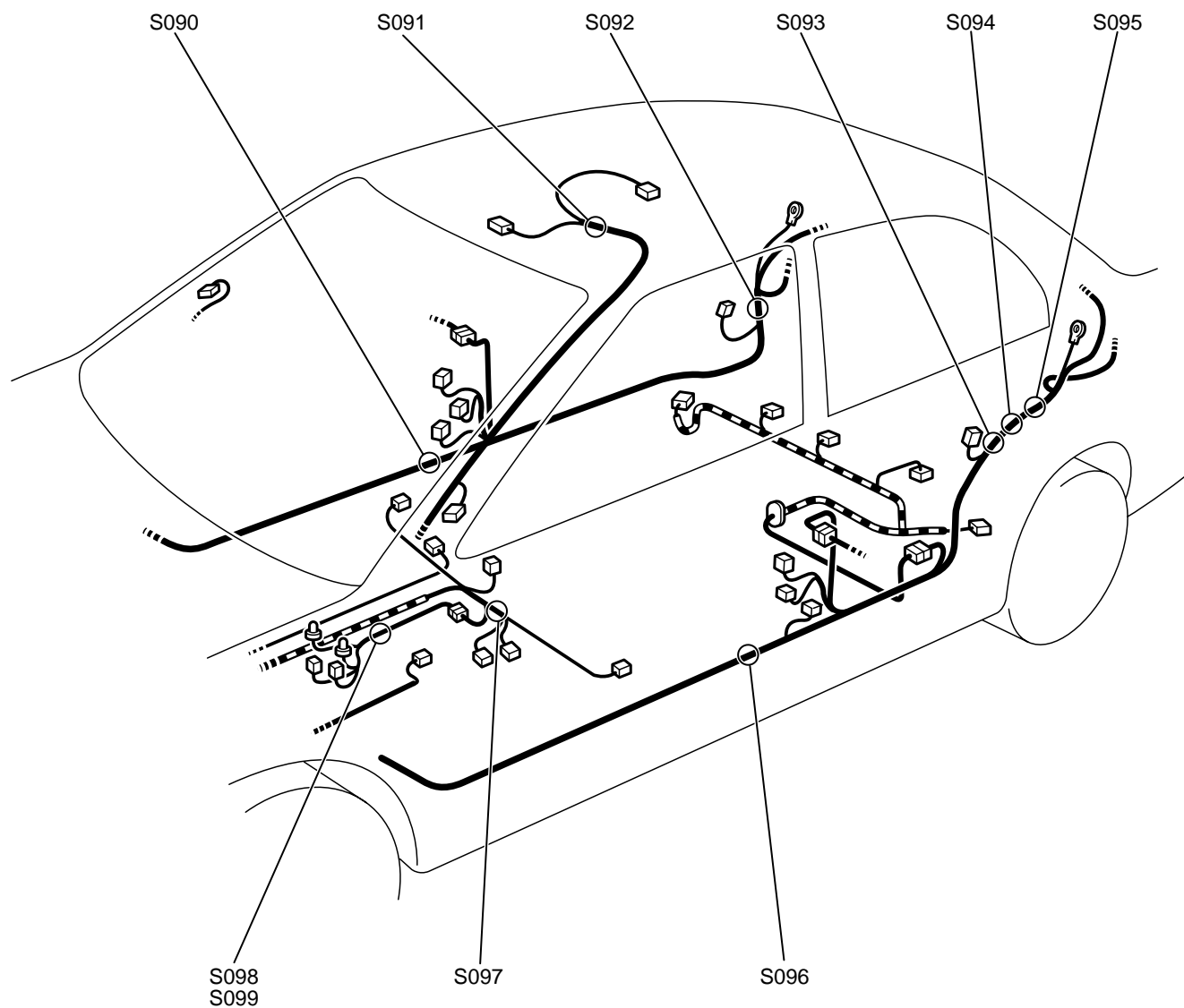
2.4L ENGINE



AC307272AC

## FLOOR AND ROOF

M1802001200551



AC307214AB

# DOOR

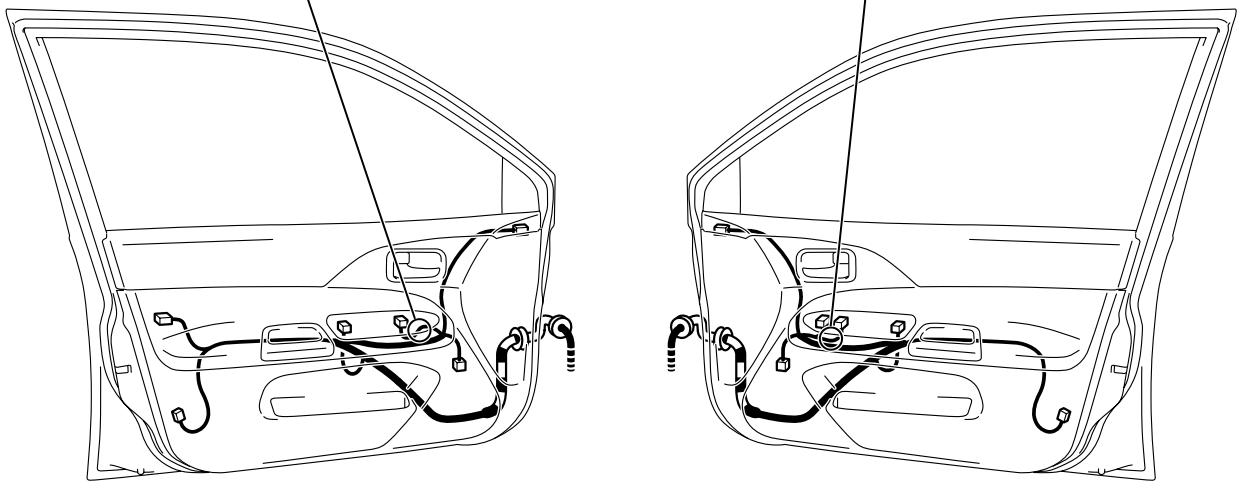
<DRIVER'S SIDE>

<PASSENGER'S SIDE>

S100  
S101

S102

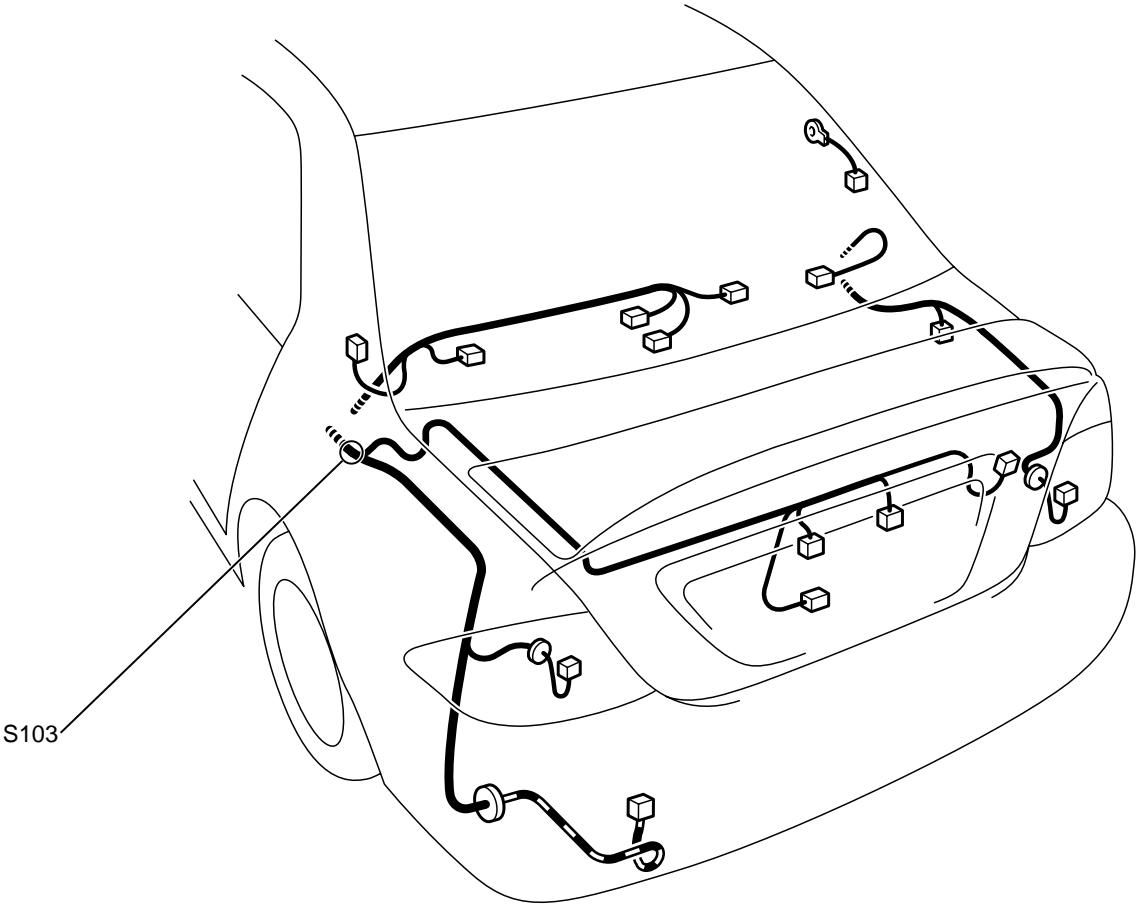
FRONT



AC307215AB

LUGGAGE COMPARTMENT

M1802001500176



AC307216AB